



**300PSI Wafer Double Door Check Valve**

As the professional manufacture, we would like to provide you high quality Hispeed® 300PSI Wafer Double Door Check Valve. We supply 300PSI Wafer Double Door Check Valve. The Check Valves are low friction loss check valves designed for use in fire protection systems. These are used in fire protection systems to allow water-flow in one direction only. Typical applications include connections between public water supplies and

private fire systems, at the discharge from fire pumps, at gravity tank connections and at fire department pumper connections. We are expecting to become your long term partner in China.

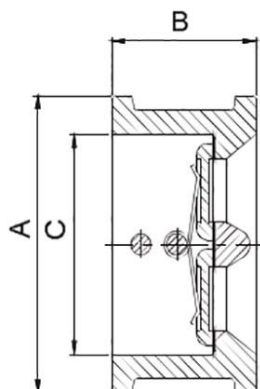
**Product Description**

As a professional high quality Hispeed® 300PSI Wafer Double Door Check Valve manufacture, you can rest assured to buy 300PSI Wafer Double Door Check Valve from our factory and we will offer you the best after-sale service and timely delivery. We exported our products to more than 30 countries with strong technical support, good quality and services.

**Hispeed® 300PSI Wafer Double Door Check Valve**

The Check Valves are low friction loss check valves designed for use in fire protection systems. These are used in fire protection systems to allow water-flow in one direction only. Typical applications include connections between public water supplies and private fire systems, at the discharge from fire pumps, at gravity tank connections and at fire department pumper connections. We are expecting to become your long term partner in China.

**Product Parameter (Specification)**



Size	A			B
	Table D / E Flange	ANSI 125# / 150# Flange	EN1092-2 PN16 Flange	
DN50	96	102	106	54
DN65	109	121	126	54
DN80	126	134	141	57
DN100	158	172	161	64
DN125	190	194	191	70
DN150	210	220	217	76
DN200	267	277	272	95
DN250	331	337	327	108
DN300	379	407	382	143
DN350	445	447	442	184
DN400	493	511	494	191
DN450	559	546	554	203
DN500	616	602	616	213
DN600	723	715	733	222

**Product Feature And Application**

The short face to face dimension and compact design of this valve allow installation and service in tight spaces

Spring Assisted for Better Dynamic Behavior

Perfect Tightness Soft Sealed Even At Low Differential Pressure

Flanged and Drilling Complies with ANSI B16.1 Class125

300psi

Fusion Bonded Epoxy Coated Interior and Exterior to AWWA C550 Standard

**Product Details**

Part Name	Material	EN Specification	ASTM Specification
Body	Grey Cast Iron	EN1561 EN-GJL-250	A126 Class B
Disc	Stainless Steel	EN 10088 X5CrNi18-10	A351 Grade CF8
Seat	Rubber	EN681, EPDM or NBR	D2000
Hinge Pin	Stainless Steel	EN10088, X20Cr13	A276 Type 420
Stop Pin	Stainless Steel	EN10088, X20Cr13	A276 Type 420
Pin Retainer	Stainless Steel	EN 10088 X5CrNi18-10	A276 Type 304
Spring	Stainless Steel	EN 10088 X5CrNi18-10	A276 Type 304
Washer	Plastic	Commercial, PTFE	Commercial, PTFE
Gasket	Rubber	EN681, EPDM or NBR	Commercial

**Deliver, Shipping And Servicing**

Ship from Qingdao or another Seaports

**FAQ**

	Q	A
1	How many days you need to install the equipment?	Unwanted.
2	How many staff abroad you sent to install the equipment?	Unwanted.
3	Can I transfer the money to you then you pay to other supplier?	YES.
4	Can I delivery the goods from other supplier to your factory? Then load together?	YES.
5	When will you leave your factory and to have your spring festival holidays?	According to national regulations.
6	Can the equipment be installed under hot weather?	YES.
7	Can Your products be installed under the cold weather?	YES.
8	Do You have office in shanghai or guangzhou that i can visit?	NONE.
9	Can you send your staff to install the equipment for us?	Unwanted.
10	Can I only buy some spare parts from you?	YES.
11	Will you will attend the fair to show your products?	YES.
12	Can you send your equipment to my warehouse in guangzhou?	YES.
13	How long it takes you to provide the designing options for us?	3 days at most.
14	What is your products standardization?	AWWA BS AIP WRAS FM.
15	How do you pack the equipment?	Negotiate with the customer.
16	Can you can design the equipment according to our	YES.

	size?	
17	How many years have your company made this kind of equipment?	5 years.
18	Which certificate do you have for your equipment?	FM.
19	How many staffs do you have in your factory?	200
20	Do you have any agent in our country?	NONE.
21	Do you have any real project pictures of the equipment?	YES.
22	How far is your factory from the city hotel?	10 km.
23	How far is your factory from the airport?	10 km.
24	How long it will take from guangzhou to your factory?	5 hours.
25	Where is your factory located?	Weifang City,Shandong province.
26	Do you provide free spare parts?	It depends.
27	What is the age range for your products?	Everyone.
28	Do you have detailed and professional installation manual?	YES.
29	If OEM is acceptable?	YES.
30	Do you provide sample? Free or charge?	It depends.
31	What is your term of payment?	30% payment in advance, 70% paid before shipment.
32	What is your MOQ?	One container.
33	Are you a trading company or a manufacturer?	Trade and Industry combination group company.
34	How long is your delivery time?	25-40 days.

Our firm aims to operating faithfully, serving to all of our shoppers , and working in new technology and new machine consistently for IOS Certificate China Dual Plate Double

Door Wafer Check Valve, We have four leading products. Our products are best sold not only in the Chinese market, but also welcomed in the international market. IOS Certificate China Dual Plate Check Valve, Double Plate Check Valve, Our tenet is "integrity first, quality best". Now we have confidence in providing you with excellent service and ideal goods. We sincerely hope we can establish win-win business cooperation with you in the future!