



HISPEED®

Hispeed Group Inc.
+86 13863633883
sales@headsupplier.com
www.headsupplier.com

CONTENTS

02	STEEL PIPE NIPPLES
03	RED BRASS PIPE NIPPLES
04	STAINLESS STEEL PIPE NIPPLES
05	READY CUT PIPES
06	INSERT HOSE ADAPTER
07	STEEL STANDARD & HALF COUPLINGS
08	L & R COUPLINGS,STAINLESS STEEL COUPLINGS & RMC COUPLINGS
09	GROOVED WELDING OUTLETS
10	MALLEABLE IRON PIPE FITTINGS
11	STAINLESS STEEL,FORGED STEEL & CAST IRON THREAD FITTINGS
12	INVESTMENT CASTING STAINLESS STEEL SCREWED FITTINGS
29	INVESTMENT CASTING STAINLESS STEEL SCREWED FITTINGS(SP-114)
32	INVESTMENT CASTING STAINLESS STEEL QUICK COUPLING
35	1PC SCREWED BALL VALVE(800PSI/1000PSI)
36	2PC SCREWED BALL VALVE(1000PSI)
37	2PC FLANGED BALL VALVE

STEEL PIPE NIPPLES

● **Standard Steel Pipe Nipples (Diameter 1/8"–8"),SCH#40**



American Standard:ASTM A733

Pipe: ASTM A53 (Welded)
 Pipe: ASTM A106 (Seamless)
 Threads: ANSI/ASME B1.20.1

DIN Standard:DIN2982

Pipe: DIN 2440
 Threads: DIN 2990

British Standard:BS EN 10241

Pipe: BS 1387
 Threads: ISO 7/1
 Low Lead with NSF-61

Thread x Thread,Thread One End,Thread x Grooved,Grooved x grooved & L/R Threads available

American Standard Bulk Package 2 for SCH#80													Pes:Master/Inner									
Leagth (inch)	Nominal Pipe Sizes (inch)																					
	1/8	1/4	3/8	1/2	3/4	1	1 1/4	1 1/2	2	2 1/2	3	4	6									
Close Length	3/4	7/8	1	1 1/8	1 3/8	1 1/2	1 5/8	1 3/4	2	2 1/2	2 5/8	2 7/8	3 1/8									
Close	600/25	600/25	600/25	600/25	400/25	300/25	150/25	100/25	75/25													
1 1/4																						
1 1/2																						
2																						
2 1/2																						
3					400/25	400/25	300/25	200/25	150/25	75/25	50/25											
3 1/2											50/25	20	40	15								
4				400/25							20	15	30	10	5							
4 1/2					300/25						20	15	30	10	5							
5											20	15	30	8	5							
5 1/2	400/25	300/25	300/25	200/25	100/25	100/25	75/25	75/25	20	10	20	8	5									
6																20	15	10	20	8	5	
7																	50	15	10	20	8	5
8																	50	15	10	20	8	5
9																	50	15	10	20	8	5
10											50	15	10	20	8	5						
11											40	10	10	20	4	4						
12											40	10	5	10	4	4						
											30	10	5	10	4	4						
											40	30	10	5	10	4	3					
									40	20	8	5	10	4	3							
									30	20	8	5	10	4	3							

● **Available Packages for both Retail and Wholesale**

- Bar Coded Nipples with Display Boxes
- Bar Coded Nipples with Bags
- Bulk Nipples (25 pieces per inner box)
- Single Nipple Runs (1 piece each Close to 6")
- Handy Nipple Tote Kits



- **Extra Heavy Seamless/Weld Steel Pipe Nipples SCH#80,Lead Free**
- **XXH Seamless Pipe Nipples SCH#160,Lead Free**

RED BRASS PIPE NIPPLES



● Red Brass Pipe Nipples(Diameter 1/8"-6"),SCH#40

American Standard:ASTN B687
 Pipe: ASTM B43
 Threads: ANSI/ASME B1.20.1
 NSF-31 & Lead Free
 Threads x Threads & Threads One End available

● Red Brass Pipe Nipples,SCH#80

NSF-61 & Lead Free

● Chrome Plated Pipe Nipples for Both Steel & Brass



American Standard Bulk Package 2 for SCH#80												Pes:Master/Inner																
Leagth (inch)	Nominal Pipe Sizes (inch)																											
	1/8	1/4	3/8	1/2	3/4	1	1 1/4	1 1/2	2	2 1/2	3	4	6															
Close Length	3/4	7/8	1	1 1/8	1 3/8	1 1/2	1 5/8	1 3/4	2	2 1/2	2 5/8	2 7/8	3 1/8															
1 1/4	300/25	300/25	300/25	300/25	200/25	150/25	75/25	50/25	40	20	15	10	3															
1 1/2						200/25	200/25	150/25	100/25	75/25	50/25	25	20	15	8	5	3											
2																		200/25	150/25	100/25	75/25	50/25	25	20	15	8	5	3
2 1/2																												
3						200/25	150/25	100/25	75/25	50/25	40	25	20	15	8	4	3											
3 1/2	200/25	150/25	100/25	75/25	50/25													40	25	20	15	8	4	3				
4						200/25	150/25	100/25	75/25	50/25	40	25	20	15	8	4	3											
4 1/2	200/25	150/25	100/25	75/25	50/25													40	25	20	15	8	4	3				
5						200/25	150/25	100/25	75/25	50/25	40	25	20	15	8	4	3											
5 1/2	200/25	150/25	100/25	75/25	50/25													40	25	20	15	8	4	3				
6						200/25	150/25	100/25	75/25	50/25	40	25	20	15	8	4	3											
7	200/25	150/25	100/25	75/25	50/25													40	25	20	15	8	4	3				
8						200/25	150/25	100/25	75/25	50/25	40	25	20	15	8	4	3											
9	200/25	150/25	100/25	75/25	50/25													40	25	20	15	8	4	3				
10						200/25	150/25	100/25	75/25	50/25	40	25	20	15	8	4	3											
11	200/25	150/25	100/25	75/25	50/25													40	25	20	15	8	4	3				
12						200/25	150/25	100/25	75/25	50/25	40	25	20	15	8	4	3											

STAINLESS STEEL PIPE NIPPLES

● **Stainless Steel Pipe Nipples (Diameter 1/8"-6"),SCH#40 & SCH#80**

American Standard:ASTM A733

Pipe: ASTM A312

Threads:ANSI/ASME B1.20.1

DIN/British Standard:DIN EN1024

Pipe: DIN 17457

Threads: DIN 2999/ISO 7-1

Material for SCH#40:304,304L & 316L

Material for SCH#80:304 &316

Thread x Thread & Thread One End available



American Standard Bulk Package 3 for SCH#40											Pes:Master/Inner	
Leagth (inch)	Nominal Pipe Sizes											
	1/8"	1/4"	3/8"	1/2"	3/4"	1"	1 1/4"	1 1/2"	2"	2 1/2"	3"	4"
mm	6	8	10	15	20	25	32	40	50	65	80	100
30	1200	800	600	400	300	240						
40	1200	800	600	400	300	240	120	100	80			
50	800	600	400	400	240	180	120	100	80			
60	800	600	400	300	240	180	100	80	60	40		
70	600	400	300	300	180	120	100	80	60	40	24	
80	600	400	300	200	180	120	80	60	50	30	24	12
90	400	400	240	200	140	100	80	60	50	30	20	12
100	400	300	240	200	140	100	80	50	40	20	20	8
110	400	300	200	160	120	80	60	50	40	20	16	8
120	360	240	200	160	120	80	60	40	30	20	16	8
140	360	240	160	120	100	60	50	40	30	15	12	6
150	300	200	160	120	100	60	50	30	30	15	12	6
160	300	200	120	100	80	50	40	30	20	15	12	6
180	300	160	120	100	80	50	40	30	20	15	8	6
200	200	160	120	100	60	40	30	20	20	10	8	4
250	200	120	80	60	60	40	30	20	12	10	8	4
300	200	120	80	60	50	30	24	18	12	6	4	2

READY CUT PIPES

● Ready Cut Pipes, both Seamless and Welded

American Standard: ASTM A733 (steel)

Pipe: ASTM A53

Threads: ANSI/ASME B1.20.1

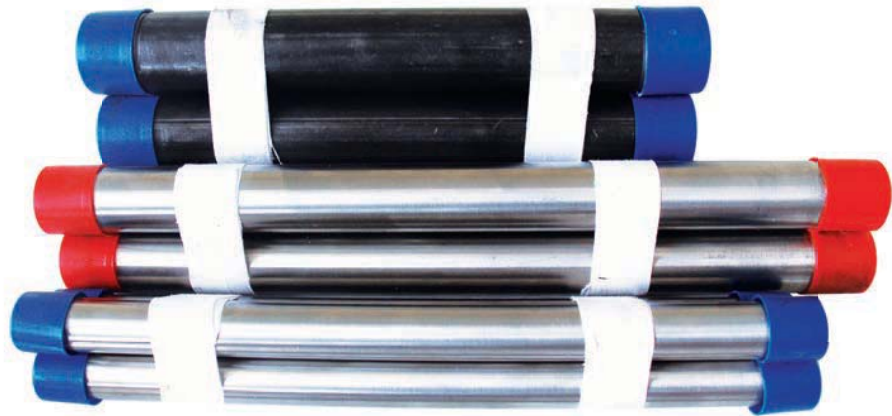
Diamter: 1/8"-6"

Length: 18"-21'

ASTM B687 (Brass)

ASTM B43

ANSI/ASME B1.20.1



American Standard Bulk Package 4 for Cut Pipe													Pes/Bundle
Leagth (inch)	Nominal Pipe Sizes (inch)												
	1/8	1/4	3/8	1/2	3/4	1	1 1/4	1 1/2	2	2 1/2	3	4	6
18	5	5	5	5	5	3	3	3	3	2	2	2	2
24	5	5	5	5	5	3	3	3	3	2	2	2	2
30	5	5	5	5	5	3	3	3	3	2	2	2	2
36	5	5	5	5	5	3	3	3	3	2	2	2	2
48	5	5	5	5	5	3	3	3	3	2	2	2	2
60	5	5	5	5	5	3	3	3	3	2	2	2	2
72	5	5	5	5	5	3	3	3	3	2	2	2	2
120	5	5	5	5	5	3	3	3	3	2	2	2	2
100	400	300	240	200	140	100	80	50	40	20	20	8	
110	400	300	200	160	120	80	60	50	40	20	16	8	
120	360	240	200	160	120	80	60	40	30	20	16	8	

DIN/British Standard Bulk Package 5for Cut Pipe													Pes/Bundle
Leagth (inch)	Nominal Pipe Sizes (inch)												
	1/8	1/4	3/8	1/2	3/4	1	1 1/4	1 1/2	2	2 1/2	3	4	
mm	6	8	10	15	20	25	32	40	50	65	80	100	
400	5	5	5	5	5	3	3	3	3	2	2	2	
500	5	5	5	5	5	3	3	3	3	2	2	2	
600	5	5	5	5	5	3	3	3	3	2	2	2	
700	5	5	5	5	5	3	3	3	3	2	2	2	
800	5	5	5	5	5	3	3	3	3	2	2	2	
1000	5	5	5	5	5	3	3	3	3	2	2	2	
1500	5	5	5	5	5	3	3	3	3	2	2	2	
200	5	5	5	5	5	3	3	3	3	2	2	2	
2500	5	5	5	5	5	3	3	3	3	2	2	2	

INSERT HOSE ADAPTER



● Insert Hose Adapter

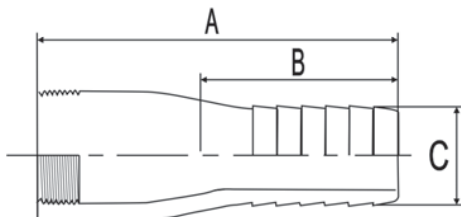
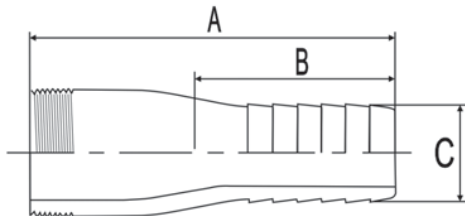
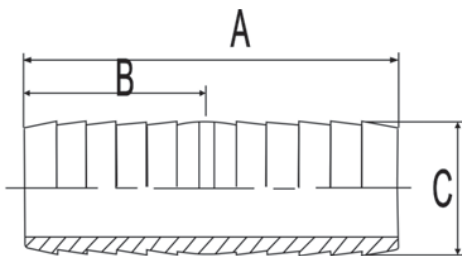
Insert Coupling: Steel, Stainless & Brass

Male Adapters: Steel, stainless, Brass & Aluminum

Female Adapters: Steel, stainless, Brass & Aluminum



STEEL PIPE BRANCHLET HEADER



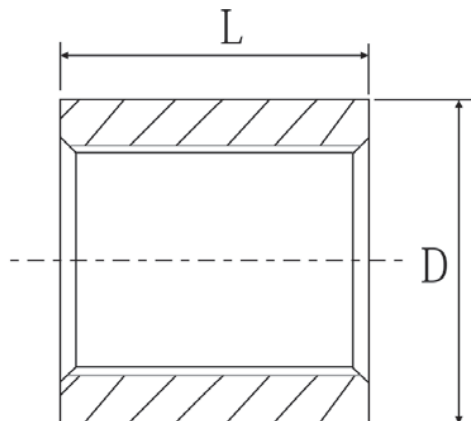
PART NO.	SIZE	A	B	C
		In.	In.	In.
IHA025MP	1/4"	2.13	1.06	0.33
IHA038MP	3/8"	2.59	1.28	0.41
IHA050MP	1/2"	3.00	1.47	0.53
IHA058MP	5/8"	3.50	1.72	0.66
IHA075MP	3/4"	4.03	1.83	0.78
IHA100MP	1"	4.03	1.83	1.03
IHA125MP	1 1/4"	4.03	1.83	1.28
IHA150MP	1 1/2"	4.00	2.00	1.50
IHA200MP	2"	4.60	2.28	2.00
IHA250MP	2 1/2"	5.25	2.63	2.50
IHA300MP	3"	5.75	2.86	3.00
IHA400MP	4"	7.39	3.73	4.00
IHA500MP	5"	10.50	5.25	5.00
IHA600MP	6"	8.88	6.83	6.00
IHA800MP	8"	14.75	7.38	8.05

PART NO.	SIZE	A	B	C
		In.	In.	In.
IHA050SP M/F	1/2"	3.13	1.63	0.531
IHA075SP M/F	3/4"	3.13	1.59	0.781
IHA100SP M/F	1"	3.38	1.59	1.031
IHA125SP M/F	1 1/4"	3.94	1.88	1.250
IHA150SP M/F	1 1/2"	4.13	2.19	1.531
IHA200SP M/F	2"	4.69	2.44	2.031
IHA250SP M/F	2 1/2"	5.56	2.88	2.531
IHA300SP M/F	3"	6.13	3.25	3.031
IHA400SP M/F	4"	7.31	3.88	4.031
IHA500SP M/F	5"	9.00	5.38	5.031
IHA600SP M/F	6"	11.00	6.50	6.046
IHA800SP M/F	8"	12.13	7.75	8.046
IHA1000SP M/F	10"	13.13	8.75	10.046
IHA1200SP M/F	12"	15.00	10.13	12.046
IHA1400SP M/F	14"	18.00	12.00	14.000

STEEL STANDARD & HALF COUPLINGS

● Steel Standard Full Marchent Couplings

American Standard: ASTM A865
 Threads: ANSI/ASME B1.20.1
 Diameter: 1/8"-12"



Part NO.	Size	D	L	Packing	
	In.	In.	In.	Inner	Master
SC00	1/8"	0.563	0.813	25	600
SC01	1/4"	0.719	1.188	25	600
SC02	3/8"	0.875	1.188	25	600
SC03	1/2"	1.063	1.563	25	400
SC04	3/4"	1.313	1.625	25	200
SC05	1"	1.576	2.000	25	150
SC06	1 1/4"	1.900	2.063	25	100
SC07	1 1/2"	2.200	2.063	25	75
SC08	2"	2.750	2.125	25	50
SC09	2 1/2"	3.250	3.125		20
SC10	3"	4.000	3.250		15
SC11	4"	5.000	3.500		10
SC12	5"	6.296	3.750		5
SC13	6"	7.390	4.000		3

● Steel Standard Half Marchent Couplings

American Standard: ASTM A865
 Threads: ANSI/ASME B1.20.1
 Diameter: 1/8"-12"

Part NO.	Size	D	L	Packing	
	In.	In.	In.	Inner	Master
SCH00	1/8"	0.563	0.344	50	1200
SCH01	1/4"	0.719	0.531	50	1200
SCH02	3/8"	0.875	0.531	50	1200
SCH03	1/2"	1.063	0.719	50	800
SCH04	3/4"	1.313	0.750	25	400
SCH05	1"	1.576	0.938	25	300
SCH06	1 1/4"	1.900	0.969	25	200
SCH07	1 1/2"	2.200	0.969	25	150
SCH08	2"	2.750	1.000	25	100
SCH09	2 1/2"	3.250	1.500		50
SCH10	3"	4.000	1.563		30
SCH11	4"	5.000	1.688		25
SCH12	5"	6.296	1.823		15
SCH13	6"	7.390	1.937		9

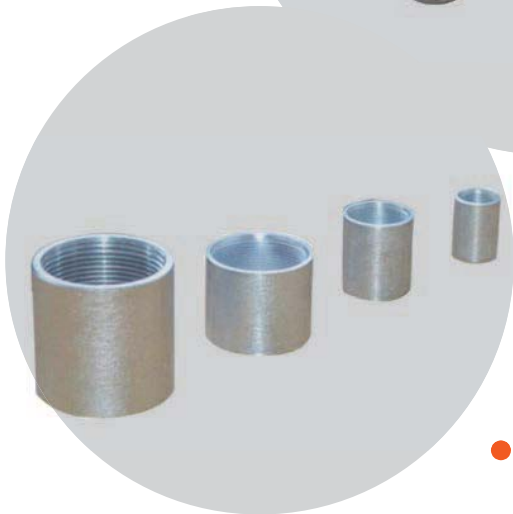
L & R COUPLINGS, STAINLESS STEEL COUPLINGS & RMC COUPLINGS



● L/R Couplings



● Stainless Steel Full & Half Couplings



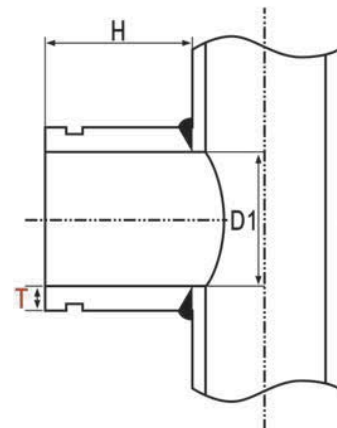
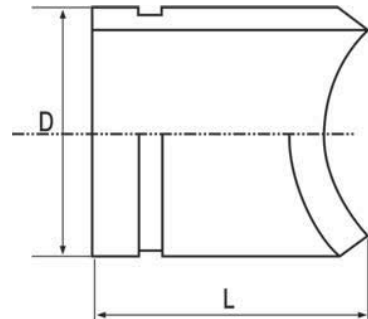
● RMC Couplings

GROOVED WELDING OUTLETS

Grooved		L		Header for pipe		H	D1	D	T	Approx
Outlet Size						Size				Weight
Inch	mm	Inch	mm	Inch	mm	mm	mm	mm	mm	kg
1 1/4	32	3.369	1 1/4	32	76	35	42	3.6	0.125	
		3.297	1 1/2	40						
		3.221	2	50						
		3.176	2 1/2	65						
		3.142	3	80						
		3.108	4	100						
		3.087	5	125						
		3.073	6	150						
1 1/2	40	3.446	1 1/2	40	76	41	48	3.7	0.2	
		3.314	2	50						
		3.246	2 1/2	65						
		3.196	3	80						
		3.149	4	100						
		3.119	5	125						
		3.099	6	150						
		3.076	8	200						
2	50	3.602	2	50	76	53	60	3.9	0.35	
		3.438	2 1/2	65						
		3.338	3	80						
		3.251	4	100						
		3.199	5	125						
		3.165	6	150						
		3.126	8	200						
2-1/2	65	3.701	2 1/2	65	76	67	76	5.2	0.700	
		3.525	3	80						
		3.379	4	100						
		3.296	5	125						
		3.244	6	150						
		3.185	8	200						
3	80	3.961	3	80	76	78	89	5.5	0.900	
		3.631	4	100						
		3.480	5	125						
		3.391	6	150						
		3.293	8	200						
4	100	5.316	4	100	102	102	114	6	1.500	
		4.898	5	125						
		4.708	6	150						
		4.517	8	200						
6	150	5.233	6	150	102	154	168	7.1	3.100	
		4.856	8	200						
8	200	6.973	8	200	102	203	219	8.2	5.300	

● Grooved Welding Outlets SCH40#,
With UL/FM Approval

MATERIAL:BLACK STEEL PIPE
ASTM A-53
PRESSURE RATING:20.7(300psi)



MALLEABLE IRON PIPE FITTINGS

● Malleable Iron Pipe Fittings

British Standard:

Material: ISO 5922

Dimensions:ISO 49

Threads: ISO 7/1

DIN Standard:

Material: DIN 2950

Dimensions:DIN1692

Threads: DIN2999

American Standard:

Material: ANSI/ASTM A197

Dimensions:ANSI/ASTM B16.3 B16.14 & B16.39

Threads: ANSI/ASTM B1.20.1



● Malleable Iron Compression Couplings



STAINLESS STEEL, FORGED STEEL & CAST IRON THREAD FITTINGS



● Stainless Steel Fittings

American Standard:

Material: 304 & 316

Threads: ANSI/ASTM B1.20.1

Threads: DIN 2999

Class: 150

● Forged Steel Fittings

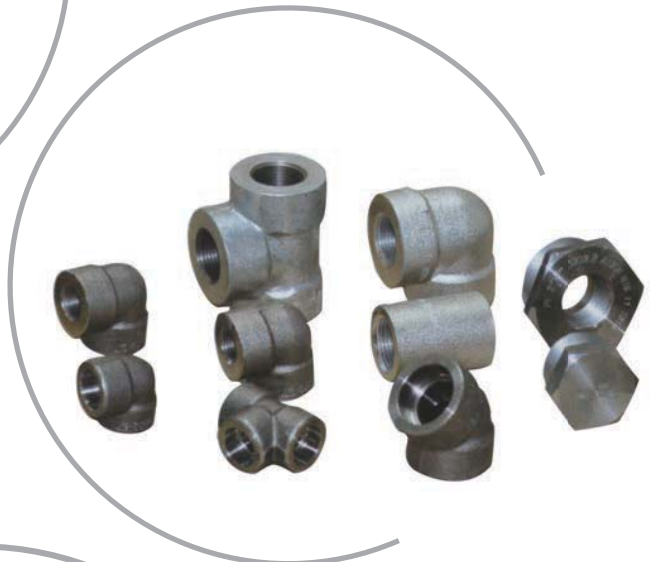
American Standard:

Material: ASTM A105

Dimension: ASTM B16.11

Threads: ANSI/ASTM B1.20.1

Class: #2000, #3000 & #6000



● Cast Iron Threaded Fittings

American Standard:

Material: ASTM A126

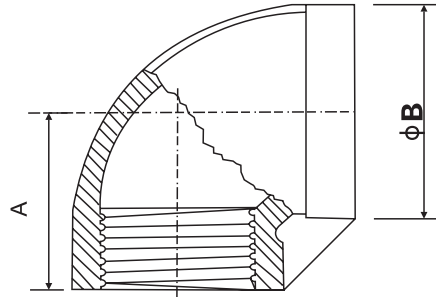
Dimension: ANSI B16.4

Threads: ANSI/ASTM B1.20.1

ULC & FM Approval

INVESTMENT CASTING STAINLESS STEEL SCREWED FITTINGS

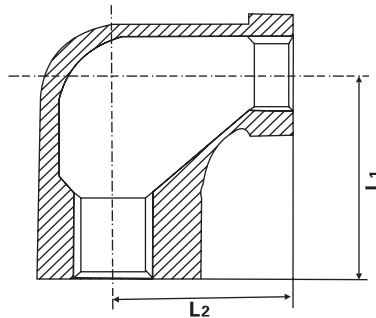
● **Elbow 90°**



Tolerance: ± 1 Unit:mm

SIZE	1/8"	1/4"	3/8"	1/2"	3/4"	1"	1-1/4"	1-1/2"	2"	2-1/2"	3"	4"
A	19.0	19.7	23.0	28.0	32.8	35.5	44.7	48.0	57.0	68.6	75.5	86.5
B	15.0	19.8	23.0	26.0	32.0	40.0	49.0	55.0	68.7	87.0	95.0	123.0

● **Red Elbow 90°**

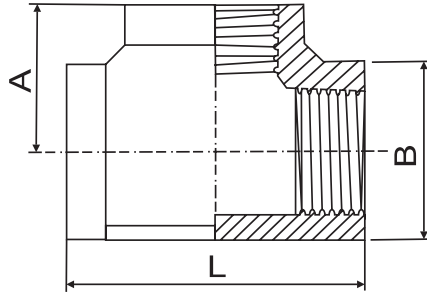


Tolerance: ± 1 Unit:mm

SIZE	1/4" × 1/8"	3/8" × 1/8"	3/8" × 1/4"	1/2" × 1/4"	1/2" × 3/8"	3/4" × 3/8"	3/4" × 1/2"	1" × 1/2"
L1	22	19	24	21	26	26.5	26.5	32.5
L2	20	21	24	22	25	28	28	34

SIZE	1" × 3/4"	1-1/4" × 3/4"	1-1/4" × 1"	1-1/2" × 1"	1-1/2" × 1-1/4"	2" × 1-1/4"	2" × 1-1/2"
L1	34	38	40	42	43	45	52
L2	35	40	40	45	47	52	55

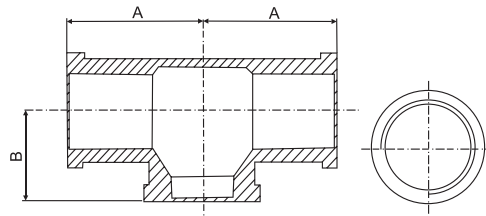
● TEE



Tolerance: ± 1 Unit:mm

SIZE	1" × 8"	1" × 4"	3/8"	1/2"	3/4"	1"	1-1/4"	1-1/2"	2"	2-1/2"	3"	4"
A	17.8	19.7	22.6	26.0	30.0	36.0	41.8	48.5	58.6	69.5	74.2	94.9
B	14.6	19.9	23.6	26.0	31.7	40.0	49.5	55.7	68.3	87.0	98.9	123.6
L	36.0	39.8	46.0	53.0	59.7	73.0	83.7	96.0	110.0	139.0	147.0	183.0

● Red TEE



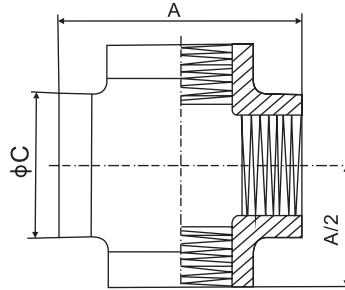
Tolerance: ± 1 Unit:mm

SIZE	1/4" × 1/8"	3/8" × 1/8"	3/8" × 1/4"	1/2" × 1/8"	1/2" × 1/4"	1/2" × 3/8"	3/4" × 1/4"	3/4" × 3/8"
A	22	19	21.5	21	21.5	21.5	25	25
B	20	21	21	21.5	22	25.3	27	27.3

SIZE	3/4" × 1/2"	1" × 1/4"	1" × 3/8"	1" × 1/2"	1" × 3/4"	1-1/4" × 3/8"	1-1/4" × 1/2"	1-1/4" × 3/4"
A	26	25	26	31	31	30	32	32
B	27.6	29	30	31.5	32	37.5	38	38.6

SIZE	1-1/4" × 1"	1-1/2" × 1/2"	1-1/2" × 3/4"	1-1/2" × 1"	1-1/2" × 1-1/4"	2" × 3/4"	2" × 1"	2" × 1-1/4"	2" × 1-1/2"
A	36	31	34	37	41	35	38	42	45
B	43	40	40	44	44	47.5	51	51	51

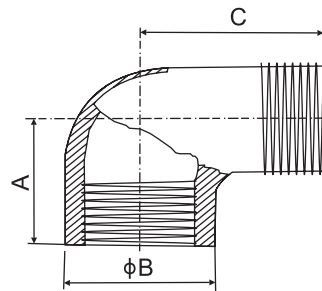
● Cross



Tolerance: ± 1 Unit:mm

SIZE	1/8"	1/4"	3/8"	1/2"	3/4"	1"	1-1/4"	1-1/2"	2"	2-1/2"	3"	4"
A	38.0	40.0	46.0	53.0	63.9	75.0	90.9	91.5	107.0	134.5	146	175
B	15.0	18.0	20.5	27.8	33.5	41.0	49.0	55.3	69.0	83.5	97	124

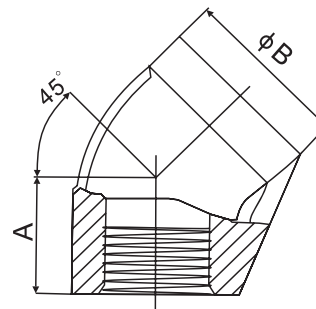
● Street Elbow 90°



Tolerance: ± 1 Unit:mm

SIZE	1/8"	1/4"	3/8"	1/2"	3/4"	1"	1-1/4"	1-1/2"	2"	2-1/2"	3"	4"
A	16.9	19.0	23.5	28.0	31.0	38.5	55.0	47.8	56.0	67.0	75.0	82.0
B	14.5	17.5	20.8	26.0	31.6	40.0	50.5	55.8	67.8	84.0	94.5	124.8
C	23.8	29.8	33.0	38.0	46.0	53.0	57.5	38.0	70.0	87.9	99.7	116.6

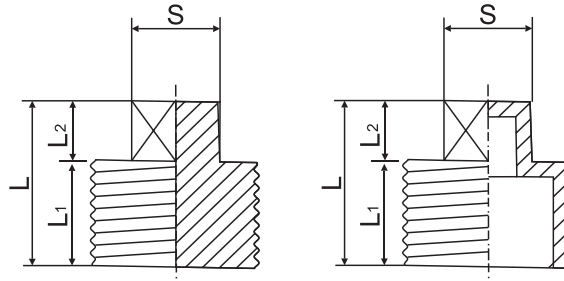
● Elbow M/F



Tolerance: ± 1 Unit:mm

SIZE	1/8"	1/4"	3/8"	1/2"	3/4"	1"	1-1/4"	1-1/2"	2"	2-1/2"	3"	4"
A	19.0	21.0	23.0	25.0	30.0	32.0	33.0	36.0	44.0	50.0	54.0	58.5
B	15.9	19.8	23.0	27.0	32.0	42.0	49.0	57.0	69.0	85.0	98.5	124.0

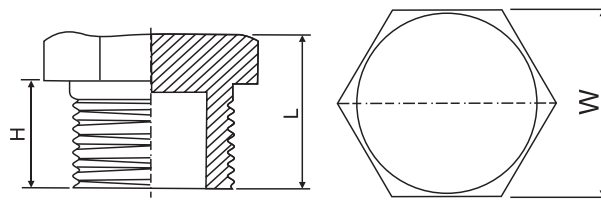
● Square Plug



Tolerance: ± 1 Unit:mm

SIZE	1/8"	1/4"	3/8"	1/2"	3/4"	1"	1-1/4"	1-1/2"	2"	2-1/2"	3"	4"
L1	10.0	12.0	14.0	15.0	18.0	21.0	24.0	25.0	29.0	31.0	34.0	40.0
L2	6.0	6.0	6.0	7.0	9.0	11.0	12.0	12.0	14.0	15.0	16.0	22.0
L	16.0	18.0	20.0	22.0	27.0	32.0	36.0	37.0	43.0	46.0	50.0	62.0
S	7.0	9.0	10.0	11.0	16.0	19.0	22.0	22.0	27.0	32.0	36.0	58.0

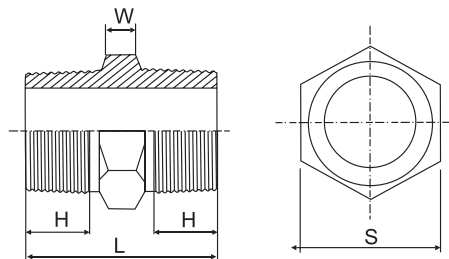
● Hexagon Plug



Tolerance: ± 1 Unit:mm

SIZE	1/8"	1/4"	3/8"	1/2"	3/4"	1"	1-1/4"	1-1/2"	2"	2-1/2"	3"	4"
H	8.0	11.0	11.0	15.0	16.0	18.0	21.5	21.5	25.5	30.5	34.0	36.0
L	14.0	17.0	17.0	21.0	24.0	27.0	32.0	33.0	38.0	45.0	48.0	54.0
W	12.7	16.0	19.0	24.5	30.0	36.0	46.0	50.0	65.0	80.8	91.0	119.0

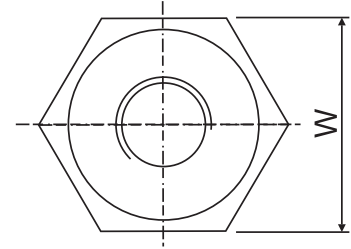
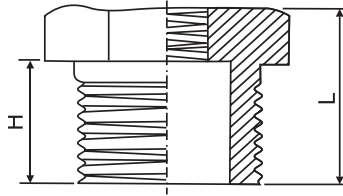
● Hexagon Nipple



Tolerance: ± 1 Unit:mm

SIZE	1/8"	1/4"	3/8"	1/2"	3/4"	1"	1-1/4"	1-1/2"	2"	2-1/2"	3"	4"
H	12.9	12.0	12.8	15.0	17.0	19.6	20.7	22.8	25.6	27.8	31.0	35.7
L	33.0	30.0	31.8	38.0	43.8	49.7	54.0	59.9	65.5	72.9	80.0	91.0
S	12.5	17.0	20.9	26.0	31.0	38.0	45.0	52.0	62.7	80.0	92.0	117.5
W	7.5	6.0	6.0	6.0	9.5	10.5	12.5	14.0	14.0	17.0	18.0	19.5

● Hexagon Bushing



Tolerance: ± 1 Unit:mm

SIZE	1/4" × 1/8"	3/8" × 1/8"	3/8" × 1/4"	1/2" × 1/8"	1/2" × 1/4"	1/2" × 3/8"	3/4" × 1/8"	3/4" × 1/4"	3/4" × 3/8"	3/4" × 1/2"
L	18.0	19.0	19.0	21.0	21.0	21.0	26.0	26.0	26.0	26.0
H	11.7	13.0	13.0	15.0	15.0	15.0	18.0	18.0	18.0	18.0
W	16.7	21.0	21.0	25.0	25.0	25.0	29.0	29.0	29.0	29.0

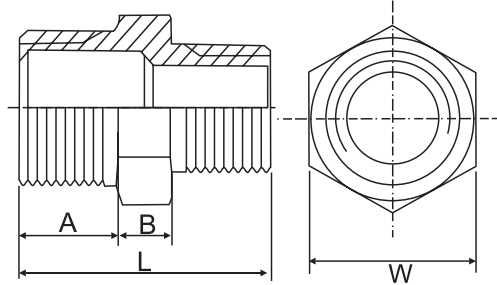
SIZE	1" × 1/4"	1" × 3/8"	1" × 1/2"	1" × 3/4"	1-1/4" × 1/2"	1-1/4" × 3/4"	1-1/4" × 1"	1-1/2" × 1/2"	1-1/2" × 3/4"
L	27.6	27.6	27.6	27.6	32.0	32.0	32.0	32.0	32.0
H	19.6	19.6	19.6	19.6	22.5	22.5	22.5	22.0	22.0
W	37.0	37.0	37.0	37.0	48.0	48.0	48.0	53.0	53.0

SIZE	1-1/2" × 1"	1-1/2" × 1-1/4"	2" × 3/4"	2" × 1"	2" × 1-1/4"	2" × 1-1/2"	2-1/2" × 1"	2-1/2" × 1-1/4"	2-1/2" × 1-1/2"
L	32.0	32.0	37.6	37.6	37.6	37.6	44.0	44.0	44.0
H	22.0	22.0	25.5	25.5	25.5	25.5	32.0	32.0	32.0
W	53.0	53.0	63.0	63.0	63.0	63.0	80.0	80.0	80.0

SIZE	2-1/2" × 2"	3" × 1/2"	3" × 3/4"	3" × 1"	3" × 1-1/4"	3" × 1-1/2"	3" × 2"	3" × 2-1/2"	4" × 1/2"
L	44.0	46.0	46.0	46.0	46.0	46.0	46.0	46.0	52.0
H	32.0	34.5	34.5	34.5	34.5	34.5	34.5	34.5	38.0
W	80.0	92.0	92.0	92.0	92.0	92.0	92.0	92.0	116.0

SIZE	4" × 3/4"	4" × 1"	4" × 1-1/4"	4" × 1-1/2"	4" × 2"	4" × 2-1/2"	4" × 3"
L	52.0	52.0	52.0	52.0	52.0	52.0	52.0
H	38.0	38.0	38.0	38.0	38.0	38.0	38.0
W	116.0	116.0	116.0	116.0	116.0	116.0	116.0

● Reducing Nipple



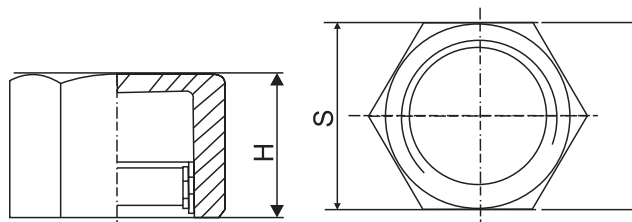
Tolerance: ± 1 Unit:mm

SIZE	1/4" × 1/8"	3/8" × 1/8"	3/8" × 1/4"	1/2" × 1/8"	1/2" × 1/4"	1/2" × 3/8"	3/4" × 1/8"	3/4" × 1/4"	3/4" × 3/8"	3/4" × 1/2"	1" × 1/8"	1" × 1/4"	1" × 3/8"	1" × 1/2"
A	12	13	13	16	16	16	33	18.2	18.2	18	19.8	19.7	20.2	20
B	8	6	6	6	6	6	9.1	9.2	9.3	12.3	9.3	9.2	9.3	12
L	31	30	31	33	34	35	38.1	39	39.5	46	40	40.7	41.9	48
W	16	20	20	23	23	23	31	31	31	29	38.4	38	38	36

SIZE	1" × 3/4"	1-1/4" × 1/2"	1-1/4" × 3/4"	1-1/4" × 1"	1-1/2" × 1/4"	1-1/2" × 1/2"	1-1/2" × 3/4"	1-1/2" × 1"	1-1/2" × 1-1/4"	2" × 1/4"	2" × 1/2"	2" × 3/4"	2" × 1"	2" × 1-1/4"
A	20	21	20.8	22	23	23.5	22.9	22.2	23	25.6	25.8	25.5	25.7	26.1
B	11.7	12.1	12.3	10	14.2	14	13.9	14	12.7	11.3	14.1	14.2	14.3	14
L	50	49	50.8	52	48.9	52.5	54.8	57	56.8	48.8	56.3	57.8	59.8	61
W	35.6	45	45	45	51.8	51.8	51.7	52	52.2	61.6	63	63.2	63.3	63

SIZE	2" × 1-1/2"	2-1/2" × 1"	2-1/2" × 1-1/4"	2-1/2" × 1-1/2"	2-1/2" × 2"	3" × 1"	3" × 1-1/4"	3" × 1-1/2"	3" × 2"	3" × 2-1/2"	4" × 1"	4" × 2"	4" × 3"
A	26	27.6	27.9	27.9	27.9	31.4	31.9	31.7	31.2	31.2	36.5	35.5	34.4
B	14	17	17.3	17	16.9	17.1	17.2	17	17.1	17.1	18.1	19	16.5
L	63	64.6	66	67	70.6	69.4	69.8	72	74.4	76.6	74.5	80.4	81.5
W	63	79.7	80	79.5	79.5	92.8	93.7	93	92.5	92.8	118	118	117.2

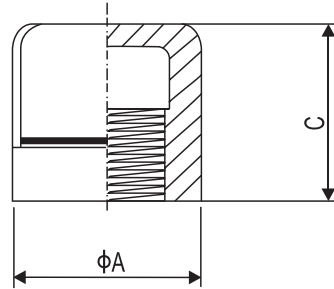
● Hexagon Cap



Tolerance: ± 1 Unit:mm

SIZE	1/8"	1/4"	3/8"	1/2"	3/4"	1"	1-1/4"	1-1/2"	2"	2-1/2"	3"	4"
S	14.0	17.0	20.5	25.0	30.0	37.0	46.0	53.0	64.0	82.0	96.0	122.0
H	15.0	15.0	18.0	20.0	21.0	25.0	31.0	33.0	36.0	43.0	45.0	48.0

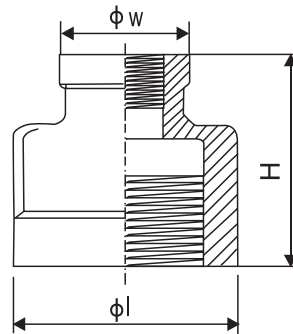
● Round Cap



Tolerance: ± 1 Unit:mm

SIZE	1/8"	1/4"	3/8"	1/2"	3/4"	1"	1-1/4"	1-1/2"	2"	2-1/2"	3"	4"
C	15.0	15.0	18.0	22.8	25.0	30.0	30.5	32.0	33.6	37.5	42.0	40.0
A	15.6	17.5	22.0	27.9	34.0	43.0	51.0	58.9	70.6	84.5	102.0	123.8

● Reducing Socket



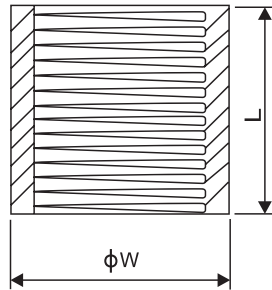
Tolerance: ± 1 Unit:mm

SIZE	1/4" x 1/8"	3/8" x 1/4"	1/2" x 1/8"	1/2" x 1/4"	1/2" x 3/8"	3/4" x 1/8"	3/4" x 1/4"	3/4" x 3/8"	3/4" x 1/2"	1" x 1/8"	1" x 1/4"	1" x 3/8"	1" x 1/2"	1" x 3/4"	1-1/4" x 1/4"
A	25.5	29	35.8	29.8	33.9	35.8	35.8	35.8	39	32.5	35.3	39.2	41	42.5	48.3
B	20	22.5	30.4	27	29.4	32.6	32.8	32.2	33	40.1	39	40.8	40.5	42.5	49.9
W	17	19	19.6	17.5	25.5	18.9	19.2	23	27	15.6	17.6	23.9	27	34.5	19.2

SIZE	1-1/4" x 3/8"	1-1/4" x 1/2"	1-1/4" x 3/4"	1-1/4" x 1"	1-1/2" x 1/4"	1-1/2" x 3/8"	1-1/2" x 1/2"	1-1/2" x 3/4"	1-1/2" x 1"	1-1/2" x 1-1/4"	2" x 1/4"	2" x 3/8"	2" x 1/2"	2" x 3/4"	2" x 1"
A	48.5	43.8	46.6	49.2	48	48.6	48.8	47.2	50.6	53.5	42	50	51.4	50	54
B	49.8	49.1	50	48.2	56.1	56.4	59.1	59.1	59	59	64	68	66	67.5	71.2
W	22.6	27	33	39.5	19.2	22.8	27.9	34.5	43	51	17.5	22.6	26.6	32	43

SIZE	2" x 1-1/4"	2" x 1-1/2"	2-1/2" x 1"	2-1/2" x 1-1/4"	2-1/2" x 1-1/2"	2-1/2" x 2"	3" x 1"	3" x 1-1/4"	3" x 1-1/2"	3" x 2"	3" x 2-1/2"	2" x 1-1/2"	4" x 2"	4" x 2-1/2"	4" x 3"
A	56.5	56.5	61.1	56.6	56.5	56	62.4	69.9	69.8	71	60.2	65.7	56.5	65.4	61.5
B	70	70	82.7	81.7	81.7	82.8	99	95.4	95.1	101	95	123.6	123	124.5	123.5
W	50.5	58.8	40.2	54.6	54.6	64	40.4	56.1	62.8	72	80.8	56.4	67.8	82.3	98

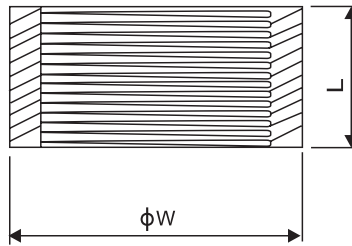
● **Socket O.D.Machined**



Tolerance: ± 1 Unit:mm

SIZE	1/8"	1/4"	3/8"	1/2"	3/4"	1"	1-1/4"	1-1/2"	2"	2-1/2"	3"	4"
L	20.0	25.0	25.0	33.0	35.0	42.0	47.0	47.0	56.0	65.0	70.0	80.0
W	14.0	18.5	21.5	26.0	32.0	39.0	48.0	54.0	66.5	82.0	95.0	122.0

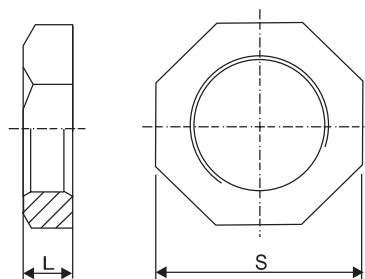
● **Half Coupling**



Tolerance: ± 1 Unit:mm

SIZE	1/8"	1/4"	3/8"	1/2"	3/4"	1"	1-1/4"	1-1/2"	2"	2-1/2"	3"	4"
L	11.0	11.0	14.0	16.0	18.0	20.0	23.0	23.0	27.0	32.0	35.0	38.0
W	14.0	18.5	21.5	26.0	32.0	39.0	48.0	54.0	66.5	82.0	95.0	122.0

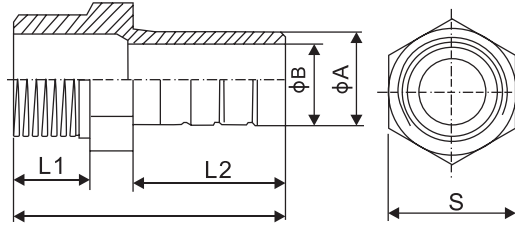
● **Lock Nut**



Tolerance: ± 1 Unit:mm

SIZE	1/8"	1/4"	3/8"	1/2"	3/4"	1"	1-1/4"	1-1/2"	2"	2-1/2"	3"	4"
L	7.0	7.0	7.8	8.0	11.0	12.0	12.9	14.6	15.0	17.0	20.7	24
S	19.0	19.0	24.0	30.0	37.7	42.8	52.0	60.0	72.0	88.0	98.3	125

● Hose Nipple



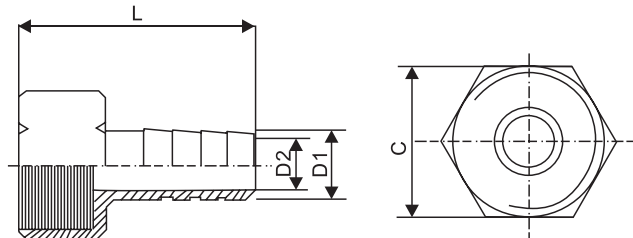
Tolerance: ± 1 Unit:mm

SIZE	1/8"	1/8"	1/8"	1/8"	1/8"	1/8"	1/8"	1/4"	1/4"	1/4"	1/4"	1/4"	1/4"	1/4"	1/4"	1/4"	1/4"	1/4"	3/8"	3/8"	3/8"	3/8"	3/8"	3/8"	3/8"	3/8"
A	6	7	8	9	10.5	12	12.7	6	7	8	9	10.5	11	12	12.4	13	14	6	7	8	9	10.5	11	12	12.7	
B	3	3.7	4	4	5	7	8	3	3.7	4	5	5	5.5	7	7	7	9	3.7	3.7	4	4	5	6	7	7	
L2	20	20	20	20	20	20	20	20	24	24	24	24	24	24	24	24	24	25	25	25	25	25	25	25	25	
L	34	34	34	34	34	34	34	42	42	42	42	42	42	42	42	42	42	45	45	45	45	45	45	45	45	
S	14	14	14	14	14	14	14	16	16	16	16	16	16	16	16	16	16	19	19	19	19	19	19	19	19	

SIZE	3/8"	3/8"	3/8"	1/2"	1/2"	1/2"	1/2"	1/2"	1/2"	1/2"	1/2"	1/2"	1/2"	1/2"	1/2"	1/2"	1/2"	1/2"	3/4"	3/4"	3/4"	3/4"	3/4"	3/4"	3/4"	1"
A	13	14	16	8	9	10.5	11	12	12.7	13	14	15	16	17	19	20	21	16	19	20	20.5	21	23	27	21	
B	7	9	10	4	4	5	7	7	7	7	9	9	10	12	13	14	15	10	13	14	14.5	15	17	21	15	
L2	25	25	25	26	26	26	26	26	26	26	26	26	26	26	26	26	26	35	35	35	35	35	35	35	45	
L	45	45	45	50	50	50	50	50	50	50	50	50	50	50	50	50	50	60	60	60	60	60	60	60	70	
S	19	19	19	22	22	22	22	22	22	22	22	22	22	22	22	22	22	27.5	27.5	27.5	27.5	27.5	27.5	27.5	36.5	

SIZE	1"	1"	1"	1"	1"	1-1/4"	1-1/4"	1-1/4"	1-1/4"	1-1/2"	1-1/2"	1-1/2"	1-1/2"	1-1/2"	1-1/2"	1-1/2"	1-1/2"	2"	2"	2"	2-1/2"	2-1/2"	2-1/2"	3"	3"	3"	4"
A	25	27	27.5	30	34	27	33	34	39	33	39	39.6	40.3	46	51	52	57	63	64	65	76	77	78	78	103		
B	19	21	21.5	23	27	20	26	27	30	26	30	30	30	36.37	44	45	50	51	54	55	66	67	68	68	91		
L2	45	45	45	45	45	45	45	45	45	46	46	46	46	46	46	46	46	55	55	55	67	67	67	92	92	92	96
L	70	70	70	70	70	75	75	75	75	80	80	80	80	80	80	80	80	90	90	90	110	110	110	135	135	135	150
S	36.5	36.5	36.5	36.5	36.5	46	46	46	46	52	52	52	52	52	52	52	63	63	63	79	79	79	93	93	93	118	

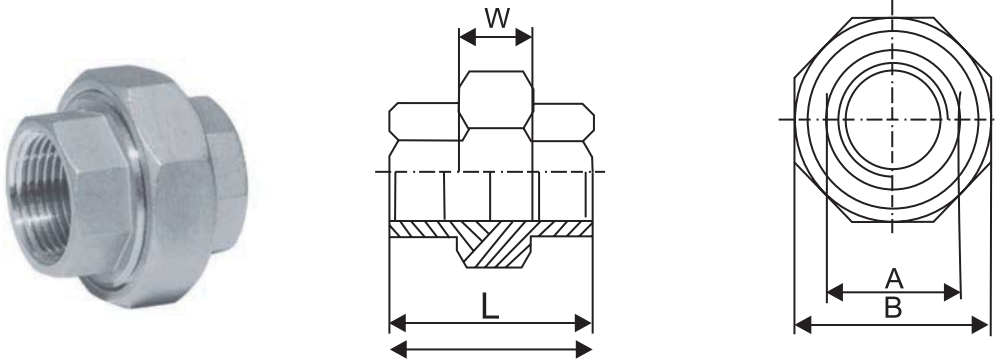
● Hexagon Hose Nipple



Tolerance: ± 1 Unit:mm

SIZE	1/8"	1/4"	1/4"	1/4"	3/8"	3/8"	3/8"	1/2"	1/2"	1/2"	3/4"	3/4"	3/4"	1"	1-1/4"	1-1/2"	2"
D1	6.5	6.5	9	11	9	10.5	13	11	14	17	16	20.5	25	27.5	34	40.3	52
D2	3.7	3.7	5.5	7	5	6.5	8	6	8	11	11	14.5	19	21	27.5	33	45
L	32	34	34	34	39	39	39	45	45	45	48	48	48	53	59	65	72
C	14	17	17	17	20.5	20.5	20.5	24.5	24.5	24.5	30	30	30	36	46	55	64

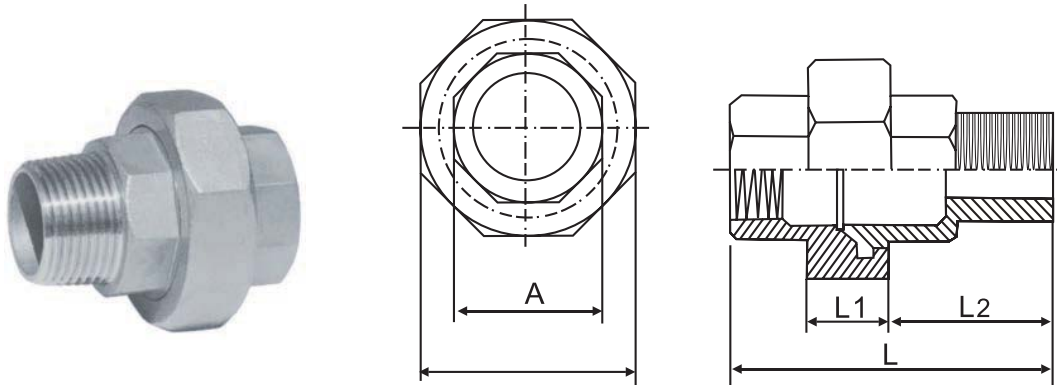
● Union F/F



Tolerance: ± 1 Unit:mm

SIZE	1/8"	1/4"	3/8"	1/2"	3/4"	1"	1-1/4"	1-1/2"	2"	2-1/2"	3"	4"
A	18.0	18.0	22.0	26.0	32.0	40.0	49.0	56.0	68.0	85.0	98.0	125.0
B	29.0	29.0	34.0	39.0	47.0	58.0	67.0	76.0	90.0	108.0	123.0	152.0
W	13.5	13.5	14.5	15.5	16.5	18.5	21.0	23.0	25.0	27.0	29.0	32.0
L	33.0	33.0	34.0	40.0	42.0	49.0	55.0	58.0	63.0	71.0	79.0	92.0

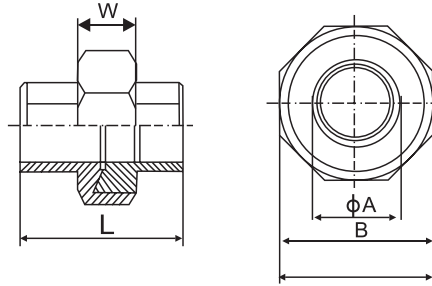
● Union M/F



Tolerance: ± 1 Unit:mm

SIZE	1/8"	1/4"	3/8"	1/2"	3/4"	1"	1-1/4"	1-1/2"	2"	2-1/2"	3"	4"
A	18.0	18.0	22.0	26.0	32.0	40.0	49.0	56.0	68.0	85.0	98.0	125.0
B	29.0	29.0	34.0	39.0	47.0	58.0	67.0	76.0	90.0	108.0	123.0	152.0
L	42.5	42.5	45.5	53.5	56.5	66.5	74.0	78.0	83.0	92.0	102.0	114
L1	13.5	13.5	14.5	15.5	16.5	18.5	21.0	23.0	25.0	27.0	29.0	32.0
L2	19.0	19.0	21.0	26.0	27.0	33.0	36.0	37.0	39.0	43.0	48.0	63.0

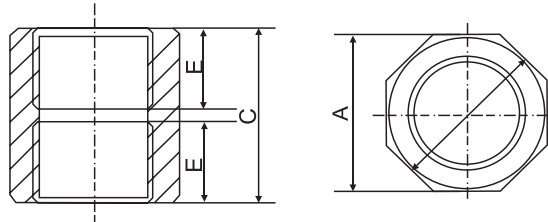
● Welding Union BW



Tolerance: ± 1 Unit:mm

SIZE	1/8"	1/4"	3/8"	1/2"	3/4"	1"	1-1/4"	1-1/2"	2"	2-1/2"	3"	4"
A	10.7	13.5	17.0	21.0	26.9	33.7	42.0	48.0	60.0	76.0	88.9	114.3
B	29.0	29.0	34.0	39.0	47.0	58.0	67.0	76.0	90.0	108.5	123.0	152.0
L	13.5	13.5	14.5	15.5	16.5	18.5	21.0	23.0	25.0	27.0	29.0	32.0
L1	33.0	33.0	34.0	40.0	42.0	49.0	55.0	58.0	63.0	71.0	77.0	92.0

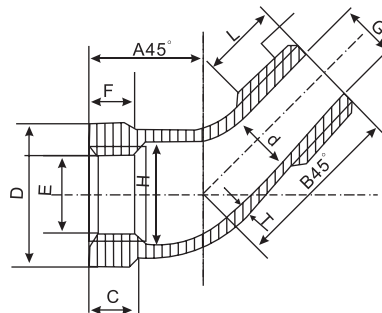
● Hexagon Socket F/F



Tolerance: ± 1 Unit:mm

SIZE	1/4"	3/8"	1/2"	3/4"	1"	1-1/4"	1-1/2"	2"	2-1/2"	3"	4"
C	25	27	34	38	44.5	49	54	66	69.5	75	85
A	19	23	29	35	46	54	63	74	91	102	125

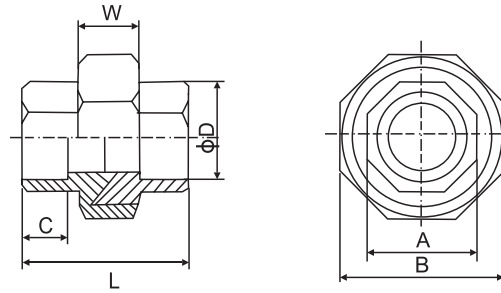
● Street Elbow 45°



Tolerance: ± 1 Unit:mm

SIZE	1/8"	1/4"	3/8"	1/2"	3/4"	1"	1-1/4"	1-1/2"	2"	2-1/2"	3"	4"
A45°	16	17	19	21	25	29	34	37	42	49	52	65
B45°	21	23	27	31	36	42	49	51	59	71	72	96
D	15.5	18	22	28	34	43	51	59	72	90	100	131

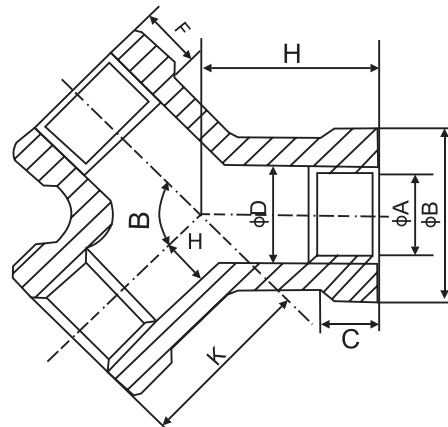
● Welding Union SW



Tolerance: ± 1 Unit:mm

SIZE	1/8"	1/4"	3/8"	1/2"	3/4"	1"	1-1/4"	1-1/2"	2"	2-1/2"	3"	4"
A	18.0	18.0	22.0	26.0	32.0	40.0	49.0	56.0	68.0	85.0	98.0	125
B	29.0	29.0	34.0	39.0	47.0	58.0	67.0	76.0	90.0	108.5	123.0	152
C	8.2	8.2	8.2	9.5	10.0	13.0	13.0	13.0	13.0	18.0	19.0	21.0
D	10.7	14.5	17.6	22.0	27.0	34.0	43.0	49.0	60.8	74.0	89.5	115.6
L	33	33	34	40.0	42.0	49.0	55.0	58.0	63.0	71.0	79.0	92

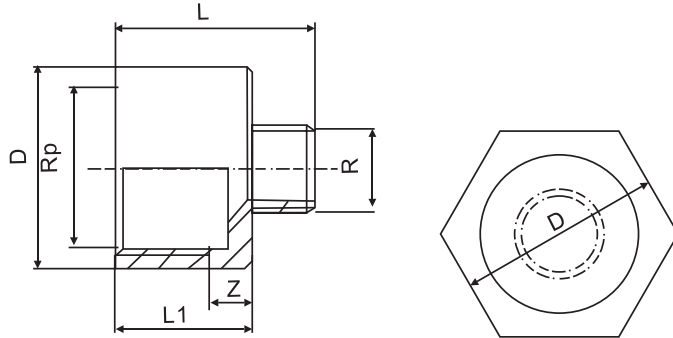
● Y-TEE



Tolerance: ± 1 Unit:mm

SIZE	1/4"	3/8"	1/2"	3/4"	1"	1-1/4"	1-1/2"	2"	2-1/2"	3"	4"
K	19	23	27	32	36	46	48	57	69	78	97
H	20	25	30	35	41	50	52	62	75	85	105
B	18.3	21.8	28	34	43	51	59	71	90	105	131

● Red Socket M/F



Tolerance: ± 1 Unit:mm

SIZE	1/8" × 1/8"	1/4" × 1/8"	1/4" × 1/4"	3/8" × 1/8"	3/8" × 1/4"	3/8" × 3/8"	1/2" × 1/8"	1/2" × 1/4"	1/2" × 3/8"	1/2" × 1/2"
L	26.8	27	30	29	31	32	33	34	35	39
L1	15	16.5	16.4	18.5	18.5	18.3	22	22	22	22
D	14	17	17	21	21	21	26	26	26	26

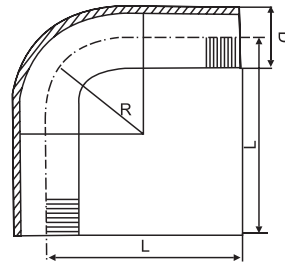
SIZE	3/4" × 1/8"	3/4" × 1/4"	3/4" × 3/8"	3/4" × 1/2"	3/4" × 3/4"	1" × 1/8"	1" × 1/4"	1" × 3/8"	1" × 1/2"	1" × 3/4"
L	33.5	35	33.5	38.5	42	36.5	38	38.5	41.5	44
L1	23	23	23	23	23	26	26	26	26	26
D	32	32	32	32	32	38	38	38	38	38

SIZE	1" × 1"	1-1/4" × 1/4"	1-1/4" × 3/8"	1-1/4" × 1/2"	1-1/4" × 3/4"	1-1/4" × 1"	1-1/4" × 1-1/4"	1-1/2" × 1/4"	1-1/2" × 3/8"
L	47	39	40	42.5	45	47	50	40	41
L1	26	27	27	27	27	27	27	28	28
D	38	46	46	46	46	46	46	54	54

SIZE	1-1/2" × 1/2"	1-1/2" × 3/4"	1-1/2" × 1"	1-1/2" × 1-1/4"	1-1/2" × 1-1/2"
L	43.5	46	48	50	52
L1	28	28	28	28	28
D	54	54	54	54	54

SIZE	2" × 1/4"	2" × 3/8"	2" × 1/2"	2" × 3/4"	2" × 1"	2" × 1-1/4"	2" × 1-1/2"	2" × 2"
L	42	42.5	45.5	48	50	52	53	56
L1	30	30	30	30	30	30	30	30
D	63	63	63	63	63	63	63	63

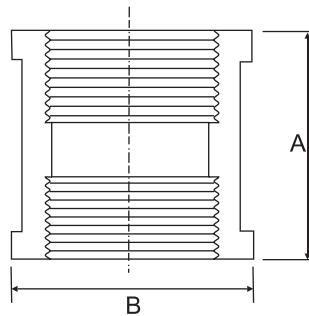
● Bend 90°



Tolerance: ± 1 Unit:mm

SIZE	1/8"	1/4"	3/8"	1/2"	3/4"	1"	1-1/4"	1-1/2"	2"
D	10.2	13.5	17.2	21.3	26.9	33.7	42.4	48.3	60.3
L	50	60	70	80	110	120	140	160	190
R	30	40	45	55	70	80	105	115	125

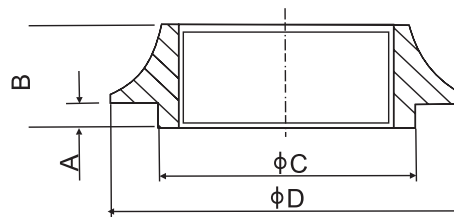
● Socket Banded



Tolerance: ± 1 Unit:mm

SIZE	1/8"	1/4"	3/8"	1/2"	3/4"	1"	1-1/4"	1-1/2"	2"	2-1/2"	3"	4"
A	20	25.6	27	34	36	44	52	51	56	68	76.5	80
B	15	21.3	25.7	27.4	32.5	41.6	50	56	69.5	87	98	123

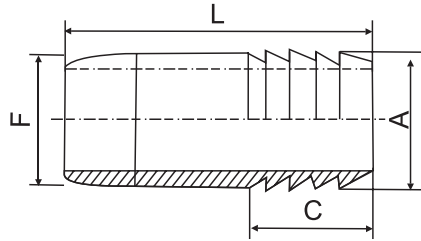
● Weld Spud



Tolerance: ± 1 Unit:mm

SIZE	1/4"	3/8"	1/2"	3/4"	1"	1-1/4"	1-1/2"	2"	2-1/2"	3"	4"
A	4	4	4	4.5	5	5	5	5	5	5	5
B	11	12	14	15	17	19	20	21.5	27	28.5	30
C	20	23	28	33	41	49	56	68	83	98	125
D	35	39	44	49	56	65	72	84	102	115	146

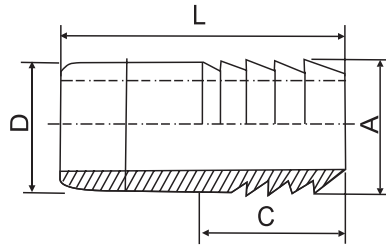
● Male Hose Nipple



Tolerance: ± 1 Unit:mm

SIZE	1/4"	3/8"	1/2"	3/4"	1"	1-1/4"	1-1/2"	2"	2-1/2"	3"
L	42	47	50	60	62	63	65	70	105	120
A	12.8	16.3	21.3	26.1	33	41.6	47.5	60	74	88
C	24	24	24	32	32	32	32	32	45	60

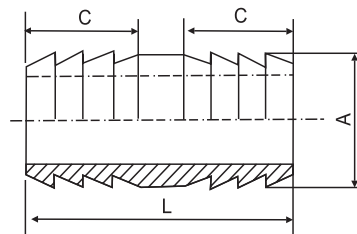
● BW Hose Nipple



Tolerance: ± 1 Unit:mm

SIZE	1/8"	1/4"	3/8"	1/2"	3/4"	1"	1-1/4"	1-1/2"	2"	2-1/2"	3"
L	32	38	40	45	60	60	65	65	65	90	100
A	9.8	12.8	16.3	21.3	26.1	33	41.6	47.5	60	74	88
C	16	24	24	24	32	32	32	32	32	45	60

● Double Hose Nipple



Tolerance: ± 1 Unit:mm

SIZE	1/8"	1/4"	3/8"	1/2"	3/4"	1"	1-1/4"	1-1/2"	2"	2-1/2"	3"
L	42	50	50	50	76	76	76	76	76	105	140
A	9.8	12.8	16.3	21.3	26.1	33	41.6	47.5	60	74	88
C	16	20	20	20	32	32	32	32	32	45	60

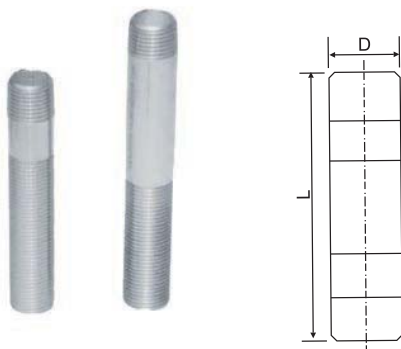
● Stainless Steel Pipe Barrel Nipple



Stainless Steel Pipe Nipple With American

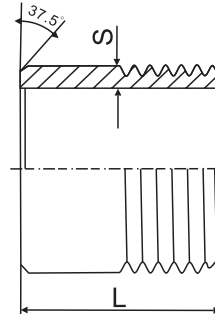
Type of Nipple	1/8	1/4	3/8	1/2	3/4	1	1 1/4	1 1/2	2	2 1/2	3	3 1/2	4	5	6
CLOSE	3/4	7/8	1	1 1/8	1 3/8	1 1/2	1 5/8	1 3/4	2	2 1/2	2 5/8	2 3/4	2 1/8	3	3 3/8
Short and long type	1 1/2	1 1/2	1 1/2	1 1/2
	2	2	2	2	2	2	2	2
	2 1/2	2 1/2	2 1/2	2 1/2	2 1/2	2 1/2	2 1/2	2 1/2	2 1/2
	3	3	3	3	3	3	3	3	3	3	3
	3 1/2	3 1/2	3 1/2	3 1/2	3 1/2	3 1/2	3 1/2	3 1/2	3 1/2	3 1/2	3 1/2
	4	4	4	4	4	4	4	4	4	4	4	4	4
	4 1/2	4 1/2	4 1/2	4 1/2	4 1/2	4 1/2	4 1/2	4 1/2	4 1/2	4 1/2	4 1/2	4 1/2	4 1/2	4 1/2	4 1/2
	5	5	5	5	5	5	5	5	5	5	5	5	5	5	5
	5 1/2	5 1/2	5 1/2	5 1/2	5 1/2	5 1/2	5 1/2	5 1/2	5 1/2	5 1/2	5 1/2	5 1/2	5 1/2	5 1/2	5 1/2
	6	6	6	6	6	6	6	6	6	6	6	6	6	6	6
	7	7	7	7	7	7	7	7	7	7	7	7	7	7	7
	8	8	8	8	8	8	8	8	8	8	8	8	8	8	8
	9	9	9	9	9	9	9	9	9	9	9	9	9	9	9
10	10	10	10	10	10	10	10	10	10	10	10	10	10	10	
11	11	11	11	11	11	11	11	11	11	11	11	11	11	11	
12	12	12	12	12	12	12	12	12	12	12	12	12	12	12	
...	

● Stainless Steel Pipe Barrel Nipple(Long Type Threaded)



SIZE	1/2"	3/4"	1"	1-1/4"	1-1/2"	2"
D	21.3	26.7	33.4	42.2	48.3	60.3
L	152.4	152.4	152.4	152.4	152.4	152.4

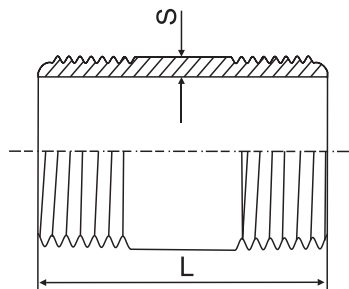
● Welding Nipple



Tolerance: ± 1 Unit:mm

SIZE	1/8"	1/4"	3/8"	1/2"	3/4"	1"	1-1/4"	1-1/2"	2"	2-1/2"	3"	4"
S	1.7	2.0	2.0	2.5	2.5	3.2	3.2	3.2	3.6	3.6	4.0	4.5
L	30.0	30.0	30.0	35.0	40.0	40.0	50.0	50.0	50.0	60.0	70.0	80.0

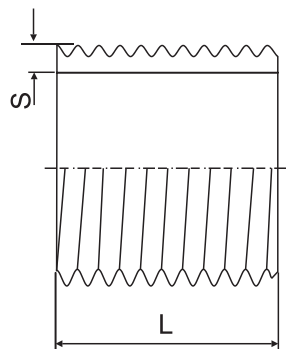
● Barrel Nipple



Tolerance: ± 1 Unit:mm

SIZE	1/8"	1/4"	3/8"	1/2"	3/4"	1"	1-1/4"	1-1/2"	2"	2-1/2"	3"	4"
S	1.7	2.0	2.0	2.5	2.5	3.2	3.2	3.2	3.6	3.6	4.0	4.5
L	40.0	40.0	40.0	60.0	60.0	60.0	80.0	80.0	100.0	100.0	120.0	120.0

● Parauel Nipple

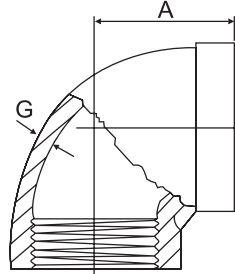


Tolerance: ± 1 Unit:mm

SIZE	1/8"	1/4"	3/8"	1/2"	3/4"	1"	1-1/4"	1-1/2"	2"	2-1/2"	3"	4"
S	1.7	2.0	2.0	2.3	2.5	3.2	3.2	3.2	3.6	3.6	4.0	4.5
L	16.0	18.0	22	25	30	35	38	38	45	55	60	70

INVESTMENT CASTING STAINLESS STEEL SCREWED FITTINGS (SP-114)

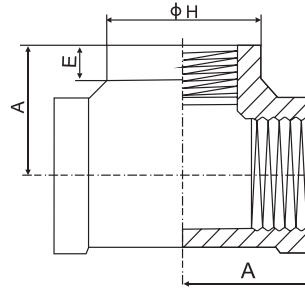
● Elbow 90°



Tolerance: ± 1 Unit:mm

SIZE	1/8"		1/4"		3/8"		1/2"		3/4"		1"		1-1/4"		1-1/2"		2"		2-1/2"		3"		4"	
	mm	in	mm	in	mm	in	mm	in	mm	in	mm	in	mm	in	mm	in	mm	in	mm	in	mm	in	mm	in
A	20.57	0.81	20.57	0.81	23.62	0.93	28.45	1.12	33.27	1.31	38.1	1.5	44.45	1.75	49.02	1.93	57.15	2.25	68.07	2.68	77.72	3.06	96.77	3.81
G	2.29	0.09	2.29	0.09	2.54	0.1	2.54	0.1	3.05	0.12	3.3	0.13	3.56	0.14	3.81	0.15	4.32	0.17	5.33	0.21	5.84	0.23	6.6	0.26

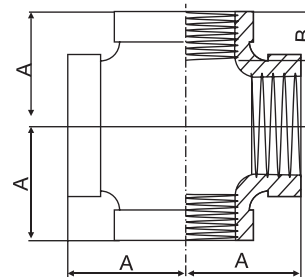
● Tee



Tolerance: ± 1 Unit:mm

SIZE	1/8"		1/4"		3/8"		1/2"		3/4"		1"		1-1/4"		1-1/2"		2"		2-1/2"		3"		4"	
	mm	in	mm	in	mm	in	mm	in	mm	in	mm	in	mm	in	mm	in	mm	in	mm	in	mm	in	mm	in
A	20.57	0.81	0.81	20.57	23.62	0.93	28.45	1.12	33.27	1.31	38.1	1.5	44.45	1.75	49.05	1.93	57.15	2.25	68.07	2.68	77.72	3.06	96.77	3.81
E(Min)	5.08	0.2	5.08	0.2	5.33	0.21	6.35	0.25	6.86	0.27	7.62	0.3	8.64	0.34	9.4	0.37	10.67	0.42	12.19	0.48	13.97	0.55	16.76	0.66
H(Min)	19.05	0.75	21.34	0.84	25.65	1.01	30.48	1.2	37.08	1.46	44.96	1.77	54.61	2.15	61.72	2.43	75.18	2.96	84.07	3.31	101.6	4	128.52	5.06

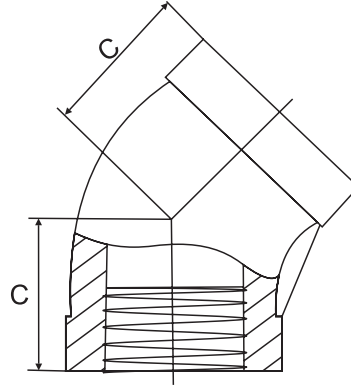
● Cross



Tolerance: ± 1 Unit:mm

SIZE	1/8"		1/4"		3/8"		1/2"		3/4"		1"		1-1/4"		1-1/2"		2"		2-1/2"		3"		4"	
	mm	in	mm	in	mm	in	mm	in	mm	in	mm	in	mm	in	mm	in	mm	in	mm	in	mm	in	mm	in
A	20.57	0.81	20.57	0.81	23.62	0.93	28.45	1.12	33.27	1.31	38.1	1.5	44.45	1.75	49.02	1.93	57.15	2.25	68.07	2.68	77.72	3.06	96.77	3.81
B (min.)	6.35	0.25	8.13	0.32	9.14	0.36	10.92	0.43	12.7	0.5	14.73	0.58	17.02	0.67	17.78	0.7	19.05	0.75	23.37	0.92	24.89	0.98	27.43	1.08

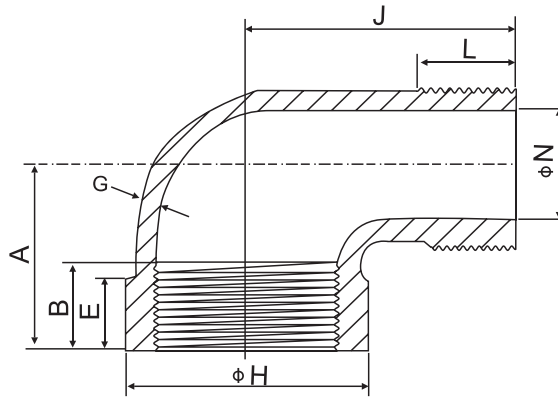
● Elbow 45°



Tolerance: ± 1 Unit:mm

SIZE	1/8"		1/4"		3/8"		1/2"		3/4"		1"		1-1/4"		1-1/2"		2"		2-1/2"		3"		4"	
	mm	in	mm	in	mm	in	mm	in	mm	in	mm	in	mm	in	mm	in	mm	in	mm	in	mm	in	mm	in
C	17.53	0.69	17.53	0.69	20.57	0.81	22.1	0.87	25.4	1	28.45	1.12	33.27	1.31	36.32	1.43	42.67	1.68	49.02	1.93	55.37	2.18	66.55	2.62

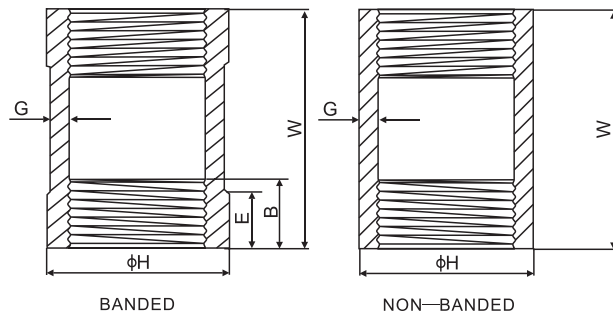
● Street Elbow 90°



Tolerance: ± 1 Unit:mm

SIZE	1/8"		1/4"		3/8"		1/2"		3/4"		1"		1-1/4"		1-1/2"		2"		2-1/2"		3"		4"	
	mm	in	mm	in	mm	in	mm	in	mm	in	mm	in	mm	in	mm	in	mm	in	mm	in	mm	in	mm	in
A	20.57	0.81	20.57	0.81	23.62	0.93	28.45	1.12	33.27	1.31	38.1	1.5	44.45	1.75	49.02	1.93	57.15	2.25	68.07	2.68	77.72	3.06	96.77	3.81
B(Min)	6.35	0.25	8.13	0.32	9.14	0.36	10.92	0.43	12.7	0.5	14.73	0.58	17.02	0.67	17.78	0.7	19.05	0.75	23.37	0.92	24.89	0.98	27.43	1.08
E(Min)	5.08	0.2	5.08	0.2	5.33	0.21	6.35	0.25	6.86	0.27	7.62	0.3	8.64	0.34	9.4	0.37	10.67	0.42	12.19	0.48	13.97	0.55	16.76	0.66
G	2.29	0.09	2.29	0.09	2.54	0.1	2.54	0.1	3.05	0.12	3.3	0.13	3.56	0.14	3.81	0.15	4.32	0.17	5.33	0.21	5.84	0.23	6.6	0.26
H(Min)	19.05	0.75	21.34	0.84	25.65	1.01	30.48	1.2	37.08	1.46	44.96	1.77	54.61	2.15	61.72	2.43	75.18	2.96	84.07	3.31	101.6	4	128.52	5.06
J	26.92	1.06	29.97	1.18	36.32	1.43	41.15	1.62	47.5	1.87	53.85	2.12	63.5	2.5	69.85	2.75	82.55	3.25	98.3	3.87	114.3	4.5	144.27	5.68
L(Min)	6.6	0.26	10.16	0.4	10.41	0.41	13.46	0.53	13.97	0.55	17.27	0.68	18.03	0.71	18.29	0.72	19.3	0.76	28.96	1.14	30.48	1.2	33.02	1.3
N(Min)	5.08	0.2	6.6	0.26	9.4	0.37	12.95	0.51	17.53	0.69	23.11	0.91	30.23	1.19	35.31	1.39	45.47	1.79	55.88	2.2	70.61	2.78	93.98	3.7

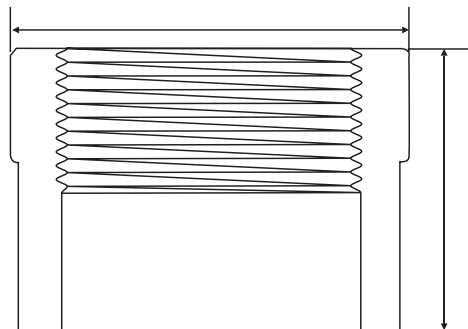
● Coupling



Tolerance: ± 1 Unit:mm

SIZE	1/8"		1/4"		3/8"		1/2"		3/4"		1"		1-1/4"		1-1/2"		2"		2-1/2"		3"		4"	
	mm	im	mm	im	mm	im	mm	im	mm	im	mm	im	mm	im	mm	im	mm	im	mm	im	mm	im	mm	im
B(Min.)	6.35	0.25	8.13	0.32	9.14	0.36	10.92	0.43	12.7	0.5	14.73	0.58	14.02	0.37	17.78	0.7	19.05	0.75	23.37	0.92	24.89	0.98	27.43	1.08
E(Min.)	5.08	0.2	5.08	0.2	5.33	0.21	6.35	0.25	6.86	0.27	7.62	0.3	8.64	0.34	9.4	0.37	10.67	0.42	12.19	0.48	13.97	0.55	16.79	0.66
G	2.29	0.09	2.29	0.09	2.54	0.1	2.54	0.1	30.5	0.12	3.3	0.13	3.56	0.14	3.81	0.15	4.32	0.17	5.33	0.21	5.84	0.23	6.6	0.26
H(Min.)	19.05	0.75	21.34	0.84	25.65	1.01	30.48	1.2	37.08	1.46	44.96	1.77	54.61	2.15	61.75	2.43	75.18	2.96	84.07	3.31	101.6	4	128.52	5.06
W(Min.)	25.4	1	25.4	1	28.45	1.12	35.05	1.38	38.1	1.5	41.15	1.62	50.8	2	53.85	2.12	63.5	2.5	72.9	2.87	80.77	3.18	93.47	3.68

● Half Coupling

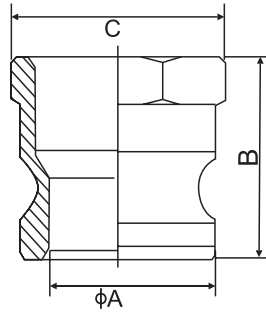


Tolerance: ± 1 Unit:mm

SIZE	1/8"		1/4"		3/8"		1/2"		3/4"		1"		1-1/4"		1-1/2"		2"		2-1/2"		3"		4"	
	mm	im	mm	im	mm	im	mm	im	mm	im	mm	im	mm	im	mm	im	mm	im	mm	im	mm	im	mm	im
H(Min.)	19.05	0.75	21.34	0.84	25.65	1.01	30.48	1.2	37.08	1.46	44.96	1.77	54.61	2.15	61.72	2.43	75.18	2.96	84.07	3.31	101.6	4	128.52	5.06
W(Min.)	25.4	1	25.4	1	25.45	1.12	35.05	1.38	38.1	1.5	41.15	1.62	50.8	2	53.85	2.12	63.5	2.5	72.9	2.87	80.77	3.15	93.47	3.68

INVESTMENT CASTING STAINLESS STEEL QUICK COUPLING

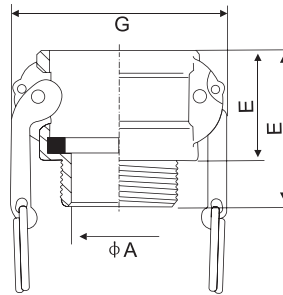
● Adaptor Female Thread



Unit:mm

SIZE	1/2"	3/4"	1"	1-1/4"	1-1/2"	2"	2-1/2"	3"	4"	6"
B:Overall Length	40.9	39	48.5	52.5	54.7	63.5	68	70	74.6	79.2
A:Min L.D	14.3	21	23.8	30.8	38.5	46	58	73.2	98.2	150
C:Max Across Corners of Adaptors	28.8	39.2	43.8	51.9	60.4	70.4	82.3	97.8	126.8	187.6

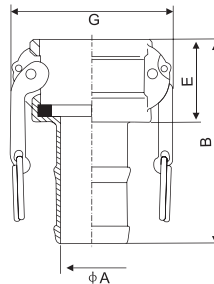
● Coupler Male Thread



Unit:mm

SIZE	1/2"	3/4"	1"	1-1/4"	1-1/2"	2"	2-1/2"	3"	4"	6"
G:Max O.D.	45.7	53.3	60.9	82.6	90.3	99.8	112.4	137.6	165.6	238.3
B:Overall Length	47.3	51	58	67.2	65.7	75.4	83.3	86.5	88.8	103.5
E:Exposed Length	31.4	32	39	44.5	45	50	54.3	55.5	55.5	65.5
A:Min L.D	15	19	25	32.6	39	50.8	63	76.2	100.8	153

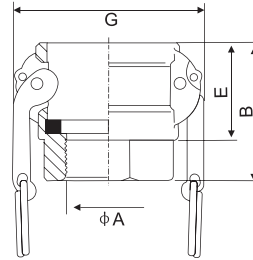
● Coupler Hose Shand



Unit:mm

SIZE	1/2"	3/4"	1"	1-1/4"	1-1/2"	2"	2-1/2"	3"	4"	6"
G:Max O.D.	45.7	53.3	60.9	82.6	90.3	99.8	112.4	137.6	165.6	238.3
B:Overall Length	87	82.8	96.2	102.5	104	129	142.3	157.1	163.5	229
E:Exposed Length	31.4	32	39	44.5	45	50	54.3	55.5	55.5	65.5
A:Min L.D	7.7	13.8	19.8	25.9	32.3	44.5	56.7	68	93.4	144.8
D:Shank O.D.	14.6	21	27	33.7	40.1	52.7	66.3	79	104.4	156.8

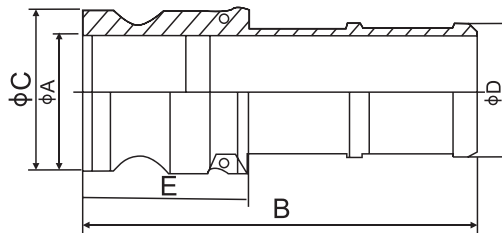
● Coupler Female Thread



Unit:mm

SIZE	1/2"	3/4"	1"	1-1/4"	1-1/2"	2"	2-1/2"	3"	4"	6"
G:Max O.D.	45.7	53.3	60.9	82.6	90.3	99.8	112.4	137.6	165.6	238.3
B:Overall Length	49.5	51	61	67.5	67	72.2	83.3	86.5	88.8	103.5
E:Exposed Length	31.4	32	39	44.5	45	50	54.3	55.5	55.5	65.5
A:Min L.D	18	21	25	32.6	39	50.8	63	76.2	100.8	152.6

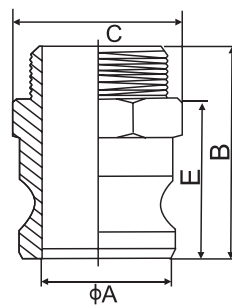
● Adaptor Hose Shank



Unit:mm

SIZE	1/2"	3/4"	1"	1-1/4"	1-1/2"	2"	2-1/2"	3"	4"	6"
G:Max O.D.	30.3	35	38	48	55.4	65.3	79.5	93.5	121.5	179
B:Overall Length	86.5	86.3	105.8	109.5	113	138.5	149.5	166.6	174.5	238.5
E:Exposed Length	42	35.3	48.6	51.5	54	59.5	61.5	65	66.5	75
A:Min L.D	7.8	13.8	19.8	25.9	32.3	44.5	56.7	68	93.5	144.8
D:Shand O.D.	14.6	21	27	33.7	40.1	52.7	66.3	79	104.4	156.8

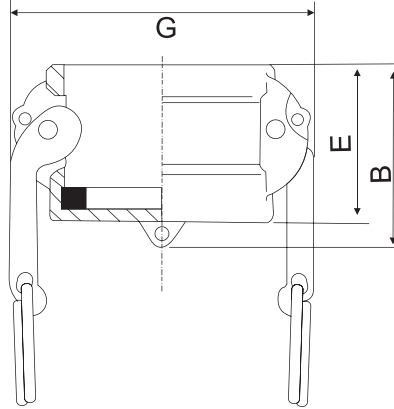
● Adaptor Male Thread



Unit:mm

SIZE	1/2"	3/4"	1"	1-1/4"	1-1/2"	2"	2-1/2"	3"	4"	6"
B:Overall Length	49	58	67.5	73.2	74.7	87.1	97	101	107.9	116.3
E:Exposed Length	34	39	48.5	52.5	54	61.7	68	70	74.6	79.2
A:Min L.D	14.2	21	23.8	30.8	38.5	46	58	73.2	98.2	150
C:Max Across Corners of Adaptors	28.6	39.2	43.8	51.9	60.4	70.4	82.3	97.8	126.8	187.6

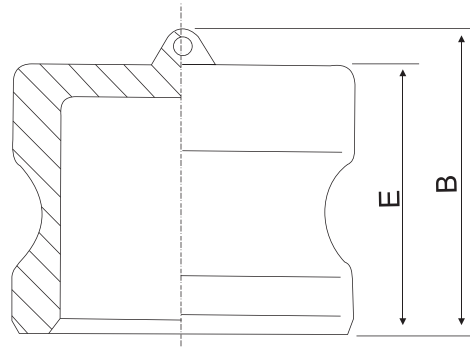
● Dust Cap



Unit:mm

SIZE	1/2"	3/4"	1"	1-1/4"	1-1/2"	2"	2-1/2"	3"	4"	6"
G:Overall Length	45.7	53.3	60.9	82.6	90.3	99.8	112.4	137.6	165.6	238.3
B:Overall length	43.2	46	53	58.5	59.4	65.2	69.8	71.5	72	90
E:Exposed Length	33.6	34	41	46.5	47.7	53.2	57.8	59.5	60	70.5

● Dust Plug



Unit:mm

SIZE	1/2"	3/4"	1"	1-1/4"	1-1/2"	2"	2-1/2"	3"	4"	6"
B:Overall Length	35.8	40.5	48.5	54	56.6	63.4	65	67	68.8	85
E:Exposed Length	27.6	27.5	36.5	42	44	50.8	53	55	52.6	65.5

1PC SCREWED BALL VALVE(800PSI/1000PSI)

● 1PC Screwed Ball Valve

Model:BT-1R

Size:1/4"-4" REDUCED BORE (800PSI/1000PSI)

Threaded:BSPT.BSP.NPT.DIN2999.ISO228/1

Materials:CF8M(SS316),CF8(SS304)



Features:

Investment casting body

Working pressure 800/1000PSI for W.O.G.

Adjustable stem packing

Pure teflon seals and seats

Temperature range:-60 to 450 °C

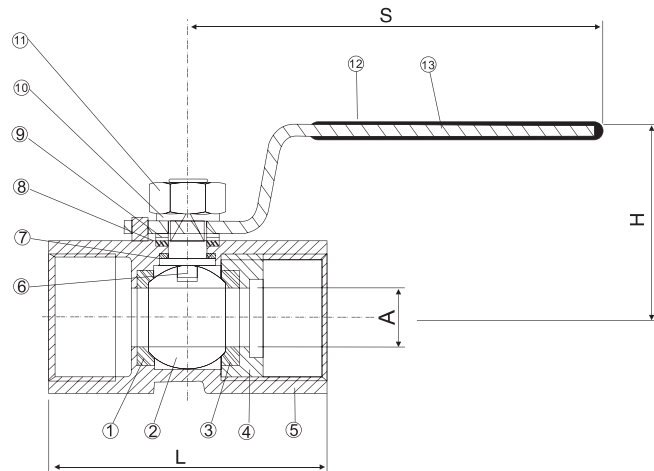
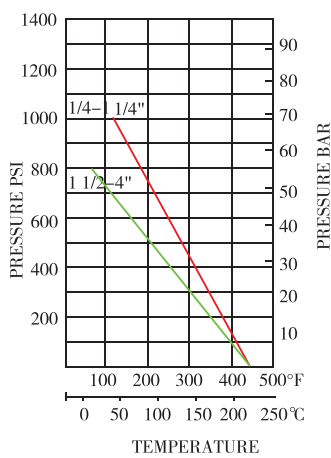
Blow-out proof stem,and safe pressure-reducing hole

100% leakage tested at 100PSI air under water

Hydrostatic test pressure:1500PSI

Locking device(optional)

PRESSURE-TEMPERATURE RATINGS
BT-1R 1/4-4"



Material List

NO.	PARTS NAME	MATERIAL	QTY
1	SEAT	PTFE	2
2	BALL	316/304	1
3	JOINT GASKET	PTFE	1
4	BODY INSERT	CF8M	1
5	BODY	CF8M	1
6	STEM	316	1
7	THRUST WASHER	PTFE	1
8	STEM PACKING	PTFE	1
9	GLAND NUT	304	1
10	STEM WASHER	304	1
11	STEM NUT	304	1
12	PLASTIC	PVC	1
13	HANDLE	SS304	1

Dimension Unit:mm

SIZE	ITEM	S	H±1	A	L±0.5
1/4"		59	28.5	4.6	39.0
3/8"		79	33.5	7.0	44.0
1/2"		87	38.0	9.0	56.5
3/4"		85	41.5	12.5	58.5
1"		99	46.0	16.0	71.0
1-1/4"		99	51.5	20.0	78.0
1-1/2"		126	65.5	25.0	83.0
2"		126	71.5	32.0	100.0
2-1/2"		176	87.5	38.0	122.0
3"		176	95.0	50.0	142.0
4"					

2PC SCREWED BALL VALVE(1000PSI)

● 2PC Screwed Ball Valve

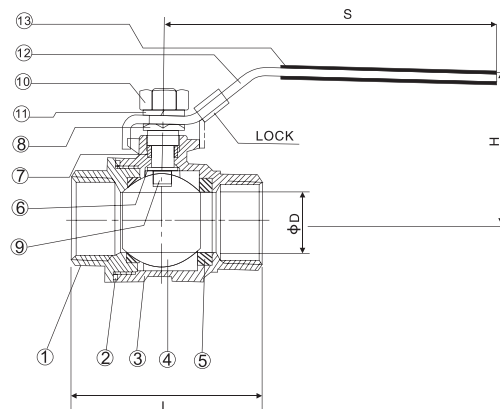
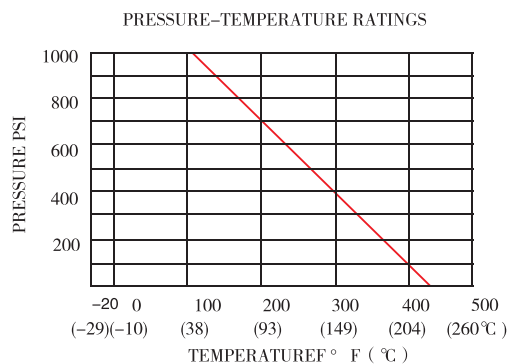
Model: BTL-2F
 Size: 1/4"~4" FULL BORE(1000PSI)

Threaded: BSPT.BSP.NPT.DIN2999.ISO 228/1
 Materials: CF8M(SS316),CF8(SS304)



Features:

- Features:
- Investment casting body
- Working pressure 1000PSI for W.O.G.
- Adjustable stem packing
- Pure teflon seals and seats
- Temperature range: -60 to 450° F
- Blow-out proof stem and safe pressure-reducing hole
- 100% leakage tested at 100PSI air under water
- Hydrostatic test pressure: 1500PSI
- Locking device(optional)



Materials List

NO	PARTS NAME	MATERIAL	QTY
1	CAP	316	1
2	BALL SEAT	PTFE	2
3	JOINT GASKET	PTFE	1
4	BODY	316	1
5	BALL	316	1
6	THRUST WASHER	PTFE	1
7	STEM PACKING	PTFE	1
8	GLAND NUT	304	1
9	STEM	304	1
10	STEM NUT	304	1
11	SPRING WASHER	304	1
12	HANDLE	304	1
13	PLASTIC SLEEVE	PVC	1

Dimensions Unit: mm

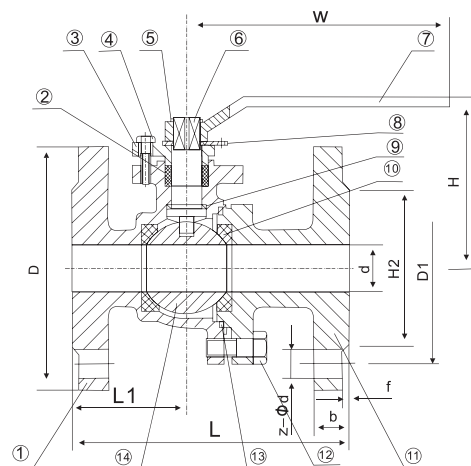
SIZE	ITEM	D	L	H	S
1/4"		12.7	47.3	46.6	99.5
3/8"		12.7	47.3	46.6	99.5
1/2"		15.0	58.2	48.2	99.5
3/4"		20.0	65.5	61.7	126.5
1"		25.0	76.5	69.3	126.5
1-1/4"		32.0	90.0	80.7	153.0
1-1/2"		38.0	98.3	87.2	153.0
2"		50.8	121.0	95.4	192.0
2-1/2"		65.0	145.2	119.5	248.0
3"		76.0	167.0	130.0	248.0
4"		100.0	224.0	167.2	320.0

2PC FLANGED BALL VALVE

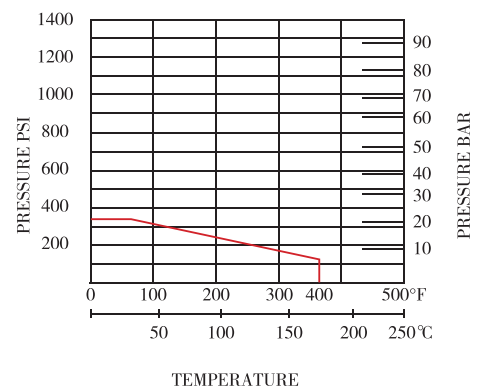
● 2PC Flanged Ball Valve

Model:FBV-PC
Size:1/2"-8"

Investment casting for body and cap
Full bore
Flange ends:ANSI B16.5
Face of face:ANSI B16.10
Pressure rating:150Lb
Working temperature:-25°C +180°C
Material:CF8M,CF8,CF3M,WCB



PRESSURE-TEMPERATURE RATING



Dimension List

SIZE	d	L	D	D1	D2	b	f	Z-φ	H	W	KGS
1/2"	15	108	89	60.5	35	11	2	4-φ 15	65	120	1.80
3/4"	20	117	98	70	43	11	2	4-φ 15	70	130	3.00
1"	25	127	108	79.5	51	12	2	4-φ 15	85	150	4.50
1-1/4"	32	140	117	89	64	13	2	4-φ 15	100	160	5.50
1-1/2"	40	165	127	98.5	73	15	2	4-φ 15	120	205	5.80
2"	50	178	152	120.5	92	16	2	4-φ 19	130	205	8.90
2-1/2"	65	190	178	139.5	105	18	2	4-φ 19	140	210	9.80
3"	80	203	190	152.5	127	19	2	4-φ 19	170	300	17.00
4"	100	229	229	190.5	157	24	2	8-φ 19	205	300	26.20
5"	125	356	254	216	186	24	2	8-φ 22	260	800	39.10
6"	150	394	279	241.5	216	26	2	8-φ 22	350	900	58.20
8"	200	457	343	298.5	270	29	2	8-φ 22	500	1000	102.60

Material List

ITEM	PART	MATERIAL	QTY
1	BODY	CF8M	1
2	STEM PACKING	PTFE	1
3	GLAND	CF8M	1
4	GLAND BOLT	SS304	2
5	SNAP RING	SS304	1
6	STEM	SS316	1
7	HANDLE	SS/CS	1
8	STOPER	SS304	1
9	THRUST WASHER	PTFE	1
10	BALL SEAT	R-PTFE15%	2
11	CAP	CF8M	1
12	BOLT	SS304	4(6)
13	BODY GASKET	PTFE	1
14	BALL	SS316	1



HISPEED®

Hispeed Group Inc.
+86 13863633883
sales@headsupplier.com
www.headsupplier.com